

Oral antibody to interleukin-10 reduces growth rate depression due to *Eimeria* spp. infection in broiler chickens

Jordan M. Sand,^{*} Maria K. Arendt,^{*,†} Alec Repasy,^{*} Gülay Deniz,[‡] and Mark E. Cook^{*,1}

^{*}Animal Sciences Department, University of Wisconsin-Madison, Madison, WI; [†]Comparative Biosciences Graduate Program, School of Veterinary Medicine, University of Wisconsin-Madison, Madison, WI; and [‡]Uludag University, Gorukle/Bursa, Turkey

ABSTRACT *Eimeria* spp. must be controlled in floor-reared poultry to prevent the onset of coccidiosis. Here we use an oral antibody to chicken IL-10 to prevent growth depression due to *Eimeria* spp. infection. Egg antibody directed against an antigenic peptide of IL-10 was produced in laying hens and measured using an ELISA. In the first experiment, egg yolk powder containing antibody to chicken IL-10 (vlpamqt conjugate) (anti-IL-10 yolk powder) was fed at 3.4 g/kg feed to determine growth response following mixed *Eimeria* spp. challenge. Chicks were fed either anti-IL-10 antibodies or control antibodies and challenged (d3) with either sterile saline or a 10× attenuated *Eimeria* spp. vaccine. Control-fed and *Eimeria*-challenged chicks grew 8.8% slower than those challenged with saline ($P < 0.04$), whereas anti-IL-10-fed *Eimeria* challenged chicks were not different from untreated controls. In the second trial a dose response was performed with doses of

either 0 (control antibody), 0.34-, or 3.4-g anti-IL-10 yolk powder/kg feed. Control-fed, *Eimeria*-challenged chicks grew 10.6% slower than control saline-challenged chicks ($P < 0.05$); however, anti-IL-10-fed chicks fed either dose of anti-IL-10 were not different from saline-challenged chicks. Finally, the effect of anti-IL-10 on acquired immunity was investigated. Chicks were fed control or anti-IL-10 yolk powder and vaccinated with a 1× dose of *Eimeria* vaccine at d 3. After 14 d, antibody was removed from the diet. Chicks were either saline or 10× *Eimeria* challenged at d 17. We found that the anti-IL-10-fed chickens did not show a reduction in growth due to challenge; hence anti-IL-10 does not appear to affect adaptive immunity during the primary immunization. Overall, use of an antibody to IL-10 is a novel method in preventing adverse effects of *Eimeria* spp. infection in poultry.

Key words: coccidiosis, egg antibody, anti-IL-10, chicken, *Eimeria*

2016 Poultry Science 95:439–446
<http://dx.doi.org/10.3382/ps/pev352>

INTRODUCTION

The full-length cDNA sequence of chicken interleukin-10 (IL-10) was first characterized using RNA isolated from cecal tonsils of *Eimeria tenella*-infected chicks (Rothwell et al., 2004). Also found was increased IL-10 mRNA expression in the intestine of *E. maxima* infected and susceptible chickens, but not *Eimeria* spp.-resistant chickens. Increased intestinal IL-10 expression 4 d following *E. maxima* was confirmed by Hong et al. (2006), and Shanmugasundaram et al. (2013) showed that Citristim inhibited *Eimeria* spp.-induced IL-10 mRNA expression in cecal tonsils and reduced oocyst shedding while improving growth and feed efficiency post-infection. These findings suggested that inhibition of *Eimeria*-induced IL-10 might be protective against *Eimeria* spp. infection.

Cyktor and Turner (2011) reviewed the mechanisms by which a number of pathogens (including bacteria, protozoa, and fungi) exploit the immunosuppressive effects of IL-10 in facilitating infection. IL-10 removed systemically with either an IL-10 neutralizing antibody or IL-10 gene disruption had increased pathogen clearance and resistance, and improved resolution of the infectious process and disease severity (Cyktor and Turner, 2011). For example, IL-10 knockout mice infected with *Cryptosporidium parvum* had a 70% reduction in oocyst shedding (Campbell et al., 2002). Paark et al. (2012) identified a mechanism by which pathogens increased IL-10 release. An *Anisakis simplex* macrophage migratory inhibitory factor homologue (MIFh) increased the release of IL-10 from human peripheral mononuclear blood cells (PMBCs). Pathogen-induced up-regulation of host IL-10 provided a compelling mechanism for evading immune detection, and Jang et al. (2011) demonstrated that use of an *Eimeria* MIFh (eMIFh) protein as a vaccine in chickens prevented *E. tenella*-induced growth suppression.

© 2016 Poultry Science Association Inc.

Received September 14, 2015.

Accepted November 5, 2015.

¹Corresponding Author: mcook@wisc.edu

Amino acid homology among the eMIFh is as low as 55%, which suggests that an eMIFh vaccine may not provide broad protection against all species of *Eimeria* that infect chickens. The recent discovery of an apical IL-10 receptor on intestinal epithelia suggests that IL-10 is secreted into the intestinal lumen (Kominisky et al., 2014), and indeed, fecal IL-10 levels have been detected in humans with intestinal inflammation (Konnikova et al., 2015). Direct targeting of host IL-10 in the lumen of the intestine of the chicken may serve as an alternative to controlling the immunosuppressive effects of host IL-10 up-regulated by *Eimeria* spp. infection. Previously it had been shown that oral IgY antibodies could be successfully used to target host proteins in the intestinal lumen (Bobeck et al., 2015). Hence, the objective of this study was to determine if an oral antibody to chicken IL-10 could prevent *Eimeria*-induced decreased growth rates in broiler chicks.

MATERIALS AND METHODS

Commercial recombinant chicken IL-10 was purchased from Kingfisher Biotech Inc. (St. Paul, MN). Chicken anti-IL-10 peptide specific antibodies were affinity purified at GeneTel (Madison, WI). Commercial rabbit anti-IL-10 antibody that cross-reacted with chicken IL-10 was purchased from Bioss (Woburn, MA). Goat anti-rabbit IgG HRP conjugated, and rabbit anti-chicken IgY HRP conjugate were purchased from Bethyl Laboratories (Montgomery, TX). Rabbit isotype control was an antibody to the sodium-phosphate cotransporter 2b, and was purchased from Santa Cruz Biotechnology (Santa Cruz, CA). Broiler chicks (Ross 308) for all the studies were purchased from Welp Hatchery (Bancroft, IA).

Chicken Interleukin-10 (IL-10) Peptide Selection

The sequence for chicken interleukin-10 (IL-10) was sourced from pubmed.gov protein: CAF18432 and was based on sequence analysis of Rothwell et al., 2004:

```
mqtccqalllllaactlpahcleptclhfsellparlrelrvkfeeikdy
fqsrdldniqlsselldefkgtfgcqvsemrlfytdvlpramqt
stshqqsmgdlgnmllglkatirchrffctekrskaikqiketfekm
dengiykamgefdifinyieeyllmrrrk
```

The bolded portion of the sequence, **vlpramqt**, was the antigenic peptide (identified by the antigen prediction program BepiPred <http://www.cbs.dtu.dk/services/BepiPred/>, Technical University Denmark) used for making anti-IL-10 peptide antibody. The chicken IL-10 amino acid sequence was aligned with a human IL-10 amino acid sequence (human IL-10, 2H24.A) and using the crystallized 3-D structure of human IL-10, the likelihood of antibody binding to the chicken peptide was estimated (Bobeck et al., 2015) (Figure 1A).

Once the peptide was shown to be located in a region of the IL-10 molecule that could be accessed by an antibody, the 8-amino acid-long peptide sequence was made (GenScript (Piscataway, NJ)). Five milligrams of peptide were conjugated to 5 mg of bovine gamma-globulin (**BGG**, for vaccine) or ovalbumin (**OVA**, for detecting peptide specific antibody) (Sigma Aldrich, St. Louis, MO) using glutaraldehyde (Fisher Scientific, Pittsburgh, PA) (Cook and Trott, 2010). Peptide-BGG or peptide-OVA conjugates were then dialyzed against phosphate buffered saline overnight using 6000–8000 molecular weight membrane tubing (Spectrapor, Los Angeles, CA). Conjugates were then frozen at -80°C in 1 mg/500 μL aliquots until needed for injection into the laying hens.

Antibody Production

All procedures involving chickens were approved by the University of Wisconsin College of Agricultural and Life Sciences Animal Care and Use Committee. Procedures that follow were as described in Cook and Trott (2010). Single Comb White Leghorn laying hens raised for life in cages with raised wire floor and never having been vaccinated with *Eimeria* spp. were injected (100 μg /chicken) with chicken IL-10-BGG-vlpramqt conjugate emulsified with Freund's Complete Adjuvant at 1:1 v/v (Fisher Scientific). Hens injected with adjuvant and BGG only (no peptide conjugate) were used for making control antibodies. Chickens were given a booster injection using the antigens described (BGG or BGG-vlpramqt conjugate) 1 wk following the initial injection; hence the only difference in antibodies from control eggs and anti-IL-10 eggs was antibody to the IL-10 peptide vlpramqt. Eggs were collected beginning 3 wk after the initial injection for a period of 6 wk. Egg yolks were separated from the albumen, lyophilized and stored at 21°C until needed. Enzyme-linked immunosorbent assays (**ELISAs**) were then used to determine the titer of the antibody. All antibody was fed as dried egg yolk powder.

ELISA

Briefly, 96-well plates were coated with 8.3 $\mu\text{g}/\text{mL}$ peptide-OVA conjugate or OVA in coating buffer (1.59 g Na_2CO_3 , 2.93 g NaHCO_3 , 0.2 g NaN_3 , pH 9.6, 1,000 mL total volume) overnight to allow for attachment of the peptide-OVA or OVA to the Nunc F MaxiSorp plate (Thermo-Fisher Scientific, Rochester, NY). Plates were then blocked with protein-free blocking buffer (Pierce, Rockford IL) for 1 hour. Plates were then washed 3 times with PBS-0.05% Tween (Fisher Scientific). Primary antibody to the peptide was extracted using acidified phosphate buffered saline (**PBS**) (pH 4.7) at a concentration of 1:10 (e.g., 0.1 g yolk powder/mL acidified PBS) overnight, and supernates were applied to the plate in 10-fold dilutions

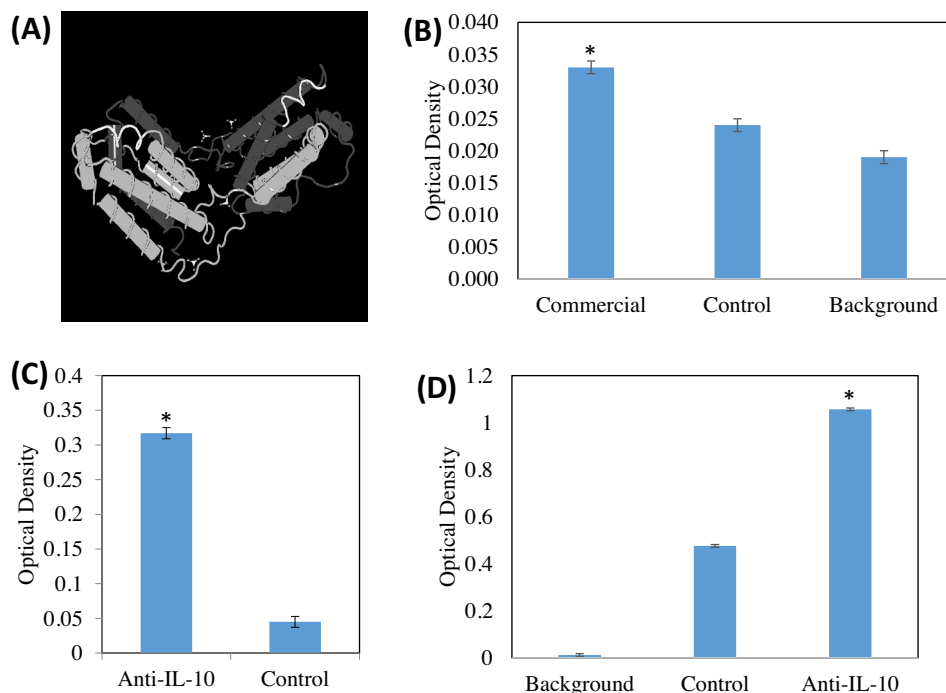


Figure 1. Anti-IL-10 antibody binds to commercial recombinant IL-10 as well as IL-10 in the lumen of the small intestine. (A) A three-dimensional structure of human IL-10 (2H24_A, pubmed.gov) was used in combination with sequence alignment to determine the placement of the peptide used to bind to chicken IL-10. The region shown in white represented the 8 amino acid peptide used in this study. (B) Commercial rabbit anti-IL-10 antibody was shown to bind commercial recombinant chicken IL-10. This study was conducted to determine the usefulness of commercial rabbit anti-IL-10 as a chicken IL-10 capture antibody. In this experiment, commercial recombinant chicken IL-10 was bound to the plate, and the ability of commercial rabbit anti-IL-10 (commercial), rabbit isotype control (control), or the absence of any primary antibody (background) was compared (secondary antibodies used were goat anti-rabbit IgG-HRP conjugates). *Denotes different binding of commercial recombinant chicken IL-10 by the rabbit anti-IL-10 antibody and the isotype control rabbit antibody and the primary antibody blank ($P < 0.05$). (C) Commercial recombinant chicken IL-10 was coated on an ELISA plate and control or affinity-purified peptide specific antibody to IL-10 was used to demonstrate the specificity of the antibody in binding recombinant chicken IL-10. We demonstrate that the affinity-purified peptide antibody binds the recombinant IL-10 significantly over control antibody ($P < 0.05$). (D) IL-10 from intestinal contents of the duodenum of chickens was demonstrated using a capture ELISA ($P < 0.05$). In this ELISA, commercial rabbit anti-IL-10 was coated on the plate. Duodenal fluids from *Eimeria* spp.-challenged chicks were incubated on the bound rabbit anti-IL-10. Next incubation was either an affinity-purified chicken anti-IL-10 antibody (anti-IL-10) or control antibody (Control) or the secondary antibody alone (Background). Using an ELISA, IL-10 in the duodenal luminal fluid was qualitatively demonstrated in the duodenal luminal fluid of *Eimeria*-challenged chicks.

from 1:10 to 1:100,000,000. Adjuvant BBG-only injected hen eggs were used as an isotype control and were added to each plate at a 1:10 concentration. Goat anti-chicken secondary antibody (Bethyl Laboratories) was then added in blocking buffer (0.4 μ L 2^oantibody/mL blocking buffer) for 30 minutes. Plates were washed 6 times with washing buffer. Substrate was then added (diethanolamine 97 mL, 100 mg MgCl₂, 0.2 g NaN₃, 800 mL ddH₂O, pH 9.8). After a 15-min incubation, the reaction was stopped using 0.5 M H₂SO₄ and the plate wells were read at 450 nm. Titer (Log₂) was the highest dilution of anti-IL-10 egg yolk antibody powder that resulted in an absorbance 2 \times above a 1:10 dilution of control egg yolk antibody powder.

Validation of Rabbit Anti-IL-10 Binding to Chicken IL-10

Commercial rabbit anti-IL-10 antibody (Bioss) was found to cross react with chicken IL-10. In this experiment, 5 μ g of chicken IL-10 was bound to Nunc

F MaxiSorp plates overnight in coating buffer. One hundred microliters of a 1:500 dilution of a commercial rabbit anti-IL-10 antibody or rabbit isotype control antibody (Santa Cruz Biotechnology, Santa Cruz, CA) was used to determine if the commercial rabbit anti-IL-10 antibody bound to chicken IL-10 (Figure 1B, see ELISA methods above, except secondary antibody was goat anti-rabbit IgG HRP conjugate, Bethyl Laboratories). An additional control included the exclusion of a primary antibody.

Anti-IL-10 ELISAs

Five micrograms of commercial recombinant chicken IL-10 was bound to Nunc F MaxiSorp plates overnight in coating buffer. One hundred microliters of a 1:500 dilution of chicken affinity-purified anti-IL-10 at a concentration of 0.85 mg/mL or adjuvant control antibody was used to determine if the anti-IL-10 antibody bound the commercial source for IL-10 (see ELISA methods above).

Anti-IL-10 Capture ELISA

A capture ELISA was used to demonstrate the presence of luminal IL-10 in the intestine of *Eimeria* infected chicks. Duodenal lumen fluid protein (250 μ g, determined by BCA assay, Pierce) collected from chicks 4 d post-mixed 10 \times *Eimeria* spp. challenge was used. Plates were coated with the commercial rabbit anti-IL-10 antibody (160 ng/mL in coating buffer, Bioss). Centrifuged luminal duodenal fluid supernates (250 μ g protein) or saline was then incubated on bound rabbit anti-IL-10 antibody for 24 h at room temperature. Following a 5 \times wash, affinity-purified chicken anti-IL-10 antibody (anti-IL-10), control antibody (control), or saline (no secondary antibody or blank) was added at 0.85 mg/mL and incubated 24 hours, then washed 5 \times . Rabbit anti-chicken FC conjugated to HRP (1:10,000 dilution per manufacturer's instructions) was used as the secondary antibody and was allowed to bind for 1 h. Following a 5 \times wash of unbound secondary antibody, substrate was used and reaction measured as described above (ELISA section).

Dietary anti-IL-10 and Eimeria Challenge Experiments: General Procedures

Three chick experiments were conducted to determine: 1) the effectiveness of dietary anti-IL-10 in preventing reduced body weights due to *Eimeria* spp. challenge; 2) if a lower dose of dietary anti-IL-10 could be protective against *Eimeria*-induced body-weight reduction; and 3) if the use of dietary anti-IL-10 interfered with vaccination against *Eimeria* mixed spp. as measured by body weight post subsequent *Eimeria* challenge. In all experiments, day-old broiler chicks (Welp's Hatchery, Bancroft, IA) were housed 5 per pen in chick battery brooders with raised wire floors in a temperature-controlled external environment (21°C). Dietary antibody feeding began at placement (d 1) and continued until the completion of the study (d 21) in experiments 1 and 2, or until withdrawal on d 14 in experiment 3 (trials 1 and 2). The antibodies (control or anti-IL-10) were added on top of a complete diet (Sun-

fresh Purina, Grey Summit, MO), and each antibody was fed to 20 pens of 5 broiler chicks each. To maintain consistent levels of egg yolk powder between diets and to assure the diets were isonitrogenous and isocaloric, anti-IL-10 egg yolk antibody was simply substituted in place of control egg yolk antibody. Hence all diets fed had consistent levels of egg yolk antibody powder (i.e., 3.4 g/kg in experiment 1 and 2, and 0.34 g/kg feed in experiment 3, trials 1 and 2). Pen served as the experimental unit.

Experiment 1. Dietary anti-IL-10 and Eimeria Challenge

At 3 d of age, 10 pens of chicks fed either control or anti-IL-10 were challenged by oral gavage with 10 \times dose of *Eimeria* mixed spp. (Advent[®] Coccidiosis Vaccine, Lincoln, NE, 10 pens) or sterile saline (10 pens/dietary antibody treatment). Chick body weights and feed intake were determined at 21 d of age, and feed conversion was calculated (Table 1). Oocysts were enumerated 7 d post *Eimeria* challenge (see below).

Experiment 2. Dose of anti-IL-10 and Eimeria spp. Challenge

In this experiment, chicks were fed control antibody (3.4 g/kg feed), anti-IL-10 antibody (3.4 g/kg feed), or 0.34 g/kg feed anti-IL10 antibody (plus 3.06 g/kg feed control antibody). At d 3, chicks were challenged with *Eimeria* spp. and variables were measured as described in experiment 1 (10 pens of chicks per dietary antibody treatment and *Eimeria* challenge; Table 2).

Experiment 3, Trials 1 and 2. Anti-IL-10 Effects on Eimeria spp. Vaccination

The third experiment was conducted to determine if the presence of anti-IL-10 in the intestine interfered with the vaccination of young chicks with a 1 \times dose of *Eimeria* spp. vaccine. If anti-IL-10 interfered with the vaccination process, a subsequent challenge with a

Table 1. Experiment 1. Effects of anti-IL-10 on performance of chicks challenged with *Eimeria* spp.

Diet	Weight (Grams)		Feed Conversion ¹		Oocyst/Gram Excreta	
	Control	<i>Eimeria</i>	Control	<i>Eimeria</i>	Control	<i>Eimeria</i>
Control	670 ^a	611 ^b	1.82	1.75	4,890	119,700
Anti-IL-10	633 ^{a,b}	659 ^{a,b}	1.65	1.6	6,030	31,860
SEM		27.6		0.157		12,210
<i>P</i> Values						
Antibody	0.78		0.19		0.06	
<i>Eimeria</i>	0.42		0.61		0.008	
Antibody \times <i>Eimeria</i>	0.0341		0.94		0.0745	

¹Feed conversion was calculated by divided the feed consumption by the total cage weight n = 10.

^{a,b}Means with different superscript in the same column were significantly different ($P < 0.05$).

Table 2. Experiment 2. Effect of different doses of anti-IL-10 antibody on the performance of chicks challenged with *Eimeria* spp.

Diet	Weight (Grams)		Feed Conversion ¹		Oocyst/Gram Excreta	
	Control	<i>Eimeria</i>	Control	<i>Eimeria</i>	Control	<i>Eimeria</i>
Control	679 ^a	607 ^b	1.67 ^b	1.79 ^a	2,829	109,324
Anti-IL-10 3.4 g/kg	670 ^a	650 ^{a,b}	1.76 ^a	1.74 ^a	5,211	27,902
Anti-IL-10 0.34 g/kg	643 ^{a,b}	649 ^{a,b}	1.72 ^{a,b}	1.72 ^{a,b}	3,706	47,575
SEM		30.7		0.022		15,542
P Values						
Antibody	0.54		0.434		0.117	
<i>Eimeria</i>	0.0279		0.14		0.001	
Antibody × <i>Eimeria</i>	0.0472		0.01		0.0913	

¹Feed conversion was calculated by divided the feed consumption by the total cage weight n = 10.

^{a,b}Means with different superscript in the same column were significantly different ($P < 0.05$).

Table 3. Experiment 3, trials 1 and 2. Effect of anti-IL-10 antibody on the performance of *Eimeria* spp. vaccinated chicks challenged with *Eimeria* spp.

Trial 1 Diet	Weight (Grams)		Feed Conversion ¹		Oocyst/Gram Excreta	
	Control	<i>Eimeria</i>	Control	<i>Eimeria</i>	Control	<i>Eimeria</i>
Control	659 ^a	621 ^b	1.92	1.99	0	1,290
Anti-IL-10	638 ^b	653 ^{a,b}	1.89	1.91	0	780
SEM		11.4		0.056		226
P Values						
Antibody	0.62		0.38		0.26	
<i>Eimeria</i>	0.32		0.45		0.001	
Antibody × <i>Eimeria</i>	0.016		0.661		0.285	
Trial 2 Diet	Weight (Grams)		Feed Conversion ¹		Oocyst/Gram Excreta	
	Control	<i>Eimeria</i>	Control	<i>Eimeria</i>	Control	<i>Eimeria</i>
Control	658	663	1.92	1.99	Nd	Nd
Anti-IL-10	643	660	1.89	1.91	Nd	nd
SEM		4.5		0.065		
P Values						
Antibody	0.19		0.45		Nd	
<i>Eimeria</i>	0.32		0.38		Nd	
Antibody × <i>Eimeria</i>	0.49		0.66		Nd	

¹Feed conversion was calculated by divided the feed consumption by the total cage weight n = 10.

^{a,b}Means with different superscript in the same column were significantly different ($P < 0.05$).

10× dose of the mixed *Eimeria* spp. vaccine should result in suppressed growth. Since it was shown in experiments 1 and 2 that anti-IL-10 protected against reduced body weight following challenge, antibody was cleared from the intestine before the 10× challenge. At d 3, 10 pens of 5 chicks on each dietary treatment (0.34 control or 0.34 anti-IL10 antibody/kg feed) were vaccinated by gavage with a 1× dose of Advent[®] Coccidiosis Vaccine (Lincoln, NE) and 10 pens chicks per dietary treatment received a saline gavage. Chicks were fed either control or anti-IL-10 antibodies diets until 14 d of age (11 d post vaccination), and then antibody was removed from the diet to clear the intestine of antibody for 3 d (Rochell et al., 2012). At 17 d of age, previously vaccinated chicks were challenged with a 10× dose of Advent[®] Coccidiosis Vaccine. Chick body weights and feed intake were determined at 21 d of age (adequate time previously found to detect reduced body weight due to *Eimeria*

challenge, unpublished) and feed conversion was calculated (Table 3). Oocysts were enumerated 7 d post *Eimeria* spp. challenge.

Determination of Oocyst Shedding

Each pen's oocysts were enumerated by the Modified McMaster's Method (Hodgson, 1970). The number of oocysts per gram of fecal matter in each sample (one sample per pen) was determined by mixing 0.5 g feces with 14.5 mL supersaturated sodium chloride solution. The homogeneous mixture was then pipetted onto both grids of a McMaster slide and allowed to sit 5 minutes to allow the oocysts to float to the interface between the glass and water. The oocyst count/gram was determined by [(grid 1 + grid 2) × 100] to account for the dilution. Oocyst number was determined on d 7-post

coccidia challenge in experiments 1 and 2 and at d 24 in experiment 3. At necropsy, intestines and cecum were examined for *Eimeria* spp.-induced lesions. Few lesions were found at necropsy; hence lesions scores were not recorded.

Statistical Analysis

Body weight, feed consumption, feed conversion, and oocyst shedding data were analyzed using a two-way ANOVA (SAS Institute Inc., Cary, NC) with antibody and *Eimeria* as main effects (2×2 factorial arrangement of treatments). When interactions were significant ($P < 0.05$), posthoc analysis was conducted to denote treatment differences using lettered superscripts. Treatment differences for ELISA data were analyzed using a Student's *t*-test.

RESULTS

Anti-IL-10 Antibody Specificity and Luminal IL-10 Presence

The titer of anti-IL-10 peptide specific egg yolk powder antibody was $10 \log_2$ relative to control egg yolk powder antibody. In Figure 1C, the specificity of egg yolk antibody (diluted 1: 500) to chicken IL-10 peptide vlpramqt relative to the control antibody (diluted to 1: 500) was demonstrated. Chicken anti-IL-10-vlpramqt showed a $3 \times$ increase in absorbance relative to the control antibody when binding a vlpramqt-OVA conjugate. Figure 1D demonstrated the presence of IL-10 in the intestinal luminal contents of the chick duodenum. Chicks were initially treated with a $10 \times$ dose of a mixed species *Eimeria* vaccine, and at d 4, chicks were euthanized and duodenal contents were collected. In this capture ELISA of duodenal contents, chicks vaccinated had significantly more IL-10 protein level when bound with the chicken anti-IL-10 antibody than when bound with control antibody (Figure 1D).

Experiment 1. Dietary Anti-IL-10 and *Eimeria* spp. Challenge

Chicks fed control antibody and challenged with *Eimeria* spp. had 3-wk body weights that were reduced 8.8% when compared to unchallenged control, however body weight was not reduced due to *Eimeria* spp. challenge in chicks fed 3.4 g/kg anti-IL-10 egg yolk antibody powder (antibody \times *Eimeria* interaction, $P < 0.05$). Antibody feeding and *Eimeria* spp. challenge had no effect on feed conversion. *Eimeria* spp. infection increased oocyst shedding ($P < 0.01$) and the oocyst shedding in between chicks fed anti-IL-10 egg yolk powder or control antibody yolk powder was not significantly different (antibody \times *Eimeria* interaction $P = 0.0745$).

Experiment 2. Dose of Anti-IL-10 and *Eimeria* Challenge

A study was conducted to determine if a lower dose of anti-IL-10 egg yolk antibody powder could protect against reduced body weight in *Eimeria* spp. challenged chicks. As in the first experiment, chicks fed control antibody egg yolk powder and challenged with *Eimeria* spp. had a reduced 3-wk body weight when compared to unchallenged chicks fed control antibody egg yolk powder (10.6%), while those fed 3.4 or 0.34 g/kg diet anti-IL-10 egg yolk powder showed no reduction in 3-wk body weight when compared to unchallenged chicks (antibody \times *Eimeria* interaction, $P < 0.05$). Data shows that the use of anti-IL-10 egg yolk antibody powder at 0.34 g/kg diet was as effective as the dose of 3.4 g/kg diet in preventing reduced 3-week body weights due to *Eimeria* spp. challenge. Oocyst shedding in *Eimeria* spp. challenged chicks was not significantly influenced by antibody type fed (antibody \times *Eimeria* interaction, $P = 0.09$). Feed conversion was lowest in chicks fed control antibody and not exposed to *Eimeria* spp. challenge. All other groups showed increased feed conversion relative to this group (antibody \times *Eimeria* interaction $P = 0.01$).

Experiment 3. Anti-IL-10 on Vaccinated and Challenged Chicks

Control antibody fed chicks vaccinated with a $1 \times$ dose of *Eimeria* spp. vaccine then challenged with a $10 \times$ dose of the vaccine had reduced 3-wk body weight when compared to chicks not exposed to *Eimeria* spp. (5.8%) in trial 1, but no change in body weight due to *Eimeria* challenge was observed in anti-IL-10-fed chicks (antibody \times *Eimeria* interaction, $P < 0.05$). In trial 2, no antibody \times *Eimeria* interaction was observed showing the effects in trial 1 were not repeatable. *Eimeria* spp. vaccination plus challenge increased oocysts shedding regardless of antibody fed (main effect of *Eimeria*, $P < 0.01$, trial 1). No effects of antibody or coccidia on feed conversion were observed in trials 1 or 2.

DISCUSSION

Oral application of antibodies to host proteins represents a new method for control of immunologic events in the lumen of the gastrointestinal system. Experiments have clearly demonstrated that antibodies from egg yolk retain binding activity into the ileum of mice (Bobeck et al., 2015). Using a model of *Eimeria* spp. infection, we demonstrate that antibody directed at a specific peptide on chicken interleukin-10 (IL-10) can be used to prevent *Eimeria* spp.-induced decreased body weight.

IL-10 is an anti-inflammatory cytokine through its ability to down-regulate pro-inflammatory cytokines such as TNF- α and IL-6, among others (Trifunovic

et al., 2015). Interestingly, IL-10 mRNA is known to be up-regulated early (d 4 post-inoculation) in *Eimeria* spp. infection, and up to 9 d post-inoculation (Hong et al., 2006). It is this potentially inappropriate activation of IL-10 that allowed us to hypothesize that IL-10 is used by *Eimeria* spp. to escape immune detection in the intestinal tract. Evidence supporting this hypothesis is the inverse relation of *Eimeria* spp. infection resistance and intestinal expression of IL-10 in different strains of chickens (Rothwell et al., 2004). Citristim, which reduced oocyte shedding in *Eimeria* spp.-infected chicks, also reduced IL-10 mRNA in the cecal tonsils (Shanmugasundaram et al., 2013). Also, IL-10 knockout mice that were infected with *Cryptosporidium parvum*, a close evolutionary relative of *Eimeria* spp., cleared the infection twice as fast, with less oocyst shedding, than control mice (Campbell et al., 2002). Thus, induction of IL-10 release appears to be critical for *Eimeria* spp. infection in host animals. In this paper, we showed that feeding an anti-IL-10 peptide egg yolk antibody protected against reduced body weight caused *Eimeria* spp. challenge. These results suggest that inhibition of IL-10 in the lumen of the gastrointestinal tract might be a viable treatment to control the adverse effect of *Eimeria* spp. infection.

A question as to how *Eimeria* spp. can regulate the host release of IL-10 can be deduced by the studies of Jang et al. (2011) and Paark et al. (2012). Jang et al. (2011) showed that *Eimeria* spp. can produce a macrophage migration inhibitory factor-like protein (unique MIF-like protein per *Eimeria* species), that when used as a vaccine in chick embryos, resulted in protection against weight loss upon subsequent infection with *Eimeria* spp. expressing that specific MIF-like protein. Paark et al. (2012) has shown that helminthes also express MIF-like proteins, and that these MIF like protein up-regulate IL-10 production in mononuclear cells. If *Eimeria* spp. MIF increases IL-10 release from mucosa cells as a means of evading immune detection, then the oral anti-IL-10 antibody may serve as a disruptor of this evasion strategy. Targeting either *Eimeria* spp. MIF or host IL-10 should demonstrate the same endpoint; resistance to *Eimeria* spp. infection. Targeting host IL-10 may have an advantage over targeting *Eimeria* spp. MIF, since each *Eimeria* species produces a different MIF-like protein (Miska et al., 2007).

Our initial experiments to determine if IL-10 was even present in the lumen of the gastrointestinal tract started with a paper published by Hong et al. (2006), who demonstrated a significant increase in IL-10 mRNA expression in intestinal intraepithelial lymphocytes at d 5 post *Eimeria* spp. infection (Hong et al., 2006). First, to determine if our antibody was specific to IL-10 from chickens, we bound our anti-IL-10 antibody to chicken IL-10 (Figure 1C). Second, to determine if IL-10 was present in the lumen of the intestine, duodenal luminal contents from chickens challenged with *Eimeria* spp. were used in a capture ELISA to de-

termine if IL-10 was present. It was demonstrated in Figure 1D that there was IL-10 present in the lumen of the duodenum and the antibody made to IL-10 bound this IL-10. These results indicate that 1) IL-10 is present in the lumen of the gastrointestinal tract, and 2) the antibody we made to IL-10 binds to chicken IL-10.

In the initial feeding study anti-IL-10 was fed at a high rate of 3.4 g/kg of chicken feed. The experiment demonstrated that anti-IL-10 protected against reduced body weight gain in *Eimeria* spp. infected chicks, however 3.4 g egg yolk antibody/kg diet of anti-IL-10 would not be cost effective for commercial use (experiment 1). The second study, which found that a dose one-tenth the level used in the first experiment was also protective, suggested that the product might have commercial application (experiment 2). Subsequent to this study, we have found that the specific anti-IL-10 antibody content in egg yolk powder is 0.4 mg/g. Based on the molecular weight of IgY and IL-10, and considering the two binding domains on each IgY molecule, 0.4 mg of IgY should be capable of neutralizing up to 80 μ g of IL-10. Quantitative analysis of total IL-10 secreted into the intestine should provide a useful estimate of the minimal amount of anti-IL-10 antibody needed in *Eimeria* spp. challenged chicks.

This last experiment we attempted to determine if anti-IL-10 antibodies interfered with the adaptive immune process. If anti-IL-10 interfered with immunity during vaccination with the 1 \times dose of vaccine, chicks fed anti-IL-10 should have shown reduced weights on challenge as compared to those fed control antibody. The finding that the body weights of chicks fed the antibody to IL-10 were not adversely affected during challenge even after removal of the anti-IL-10 antibody suggested that anti-IL-10 did not affect adaptive immune function. The finding of decreased body weight following *Eimeria* spp. challenge in vaccinated chicks fed control antibody (but not in anti-IL-10-fed chicks) in trial 1 is consistent with the literature. Danforth et al. (1997) found in a model similar to the one used in this paper that vaccination with *Eimeria* mixed spp. (different than the one used in this study) did not protect against weight loss following a high-dose challenge the same vaccine strains. While this study was not designed to test the immune-potentiating effects of feeding anti-IL-10 during an oral vaccination, the improved protection of anti-IL-10 plus vaccine relative to the vaccine alone in trial 1 suggested that anti-IL-10 may have immune-potentiating benefit. For example, anti-IL-10 might be useful in assisting the chick in developing early immunity to select microbes (e.g., *Eimeria* spp.) that are present within the environment where the chicks are first placed in commercial production facilities. This would eliminate the need for feeding anti-IL-10 throughout the life of the chicken, and may allow the chicken to develop immunity to any and all strains of *Eimeria* spp. present in the chicken's environment. Better-designed studies could test this hypothesis.

Surprisingly, in these 3 studies there was no significant difference in oocyst shedding between anti-IL-10 and control antibody fed chicks. The *P* values for the interaction in experiments 1 and 2 would suggest that more power might be needed if oocyst shedding was a desirable endpoint. Oocysts shedding in the non-challenge chicks in experiments 1 and 2 suggest a low level of exposure independent of direct gavage. The level of exposure was not enough to show differential body weight between those fed control or anti-IL-10 antibody and may be in the range that others classify as “too low to count” (Danforth et al., 1997).

In conclusion, using the model described, dietary anti-IL-10 egg yolk antibodies prevented a reduction in chick body weight due to *Eimeria* spp. challenge. Anti-IL-10 antibodies do not appear to adversely affect adaptive immunity to an *Eimeria* spp. vaccination and anti-IL-10 antibodies have a minimal effect, if any, on oocyst shedding in *Eimeria* infected chicks. Findings presented offer a novel host-targeted procedure to improve chick growth when challenged with *Eimeria* spp.

ACKNOWLEDGMENTS

The authors thank Maria Jose, Jason Ren, Jake Olson, Zachary Simons, Christina Stevenson, Dylan Easley, Megan Mezera and Christopher Nguyen for aiding in sample collection and analysis, as well as the University of Wisconsin Animal Care Staff (Dawn Irish and John Kemper) for animal care. Laying hens used for making antibodies used in these studies were kindly donated by S&R Farms, Whitewater, WI.

FUNDING

Research was supported in part by Wisconsin Alumni Research Foundation (WARF) Accelerator Grant, royalties received from WARF and University of Wisconsin School of Veterinary Medicine 12 Month Mentored Research Program, and the College of Agricultural and Life Sciences.

DISCLOSURES

MEC and JMS have an ownership interest in AbE Discovery, LLC, which has licensed technology reported in this publication. All of the remaining authors declare no financial conflict of interest.

REFERENCES

- Bobeck, E. A., E. M. Hellestad, J. M. Sand, M. L. Piccione, J. W. Bishop, C. Helvig, M. Petkovich, and M. E. Cook. 2015. Oral peptide specific egg antibody to intestinal sodium-dependent phosphate co-transporter-2b is effective at altering phosphate transport in vitro and in vivo. *Poult. Sci.* 94:1128–1137.
- Campbell, L. D., J. N. Stewart, and J. R. Mead. 2002. Susceptibility to *Cryptosporidium parvum* infections in cytokine- and chemokine-receptor knockout mice. *J. Parasitol.* 88:1014–1016.
- Cook, M. E., and D. L. Trott. 2010. IgY - Immune component of eggs as a source of passive immunity for animals and humans. *World's Poult. Sci. J.* 66:215–225.
- Cyktor, J.C., and J. Turner. 2011. Interleukin-10 and immunity against prokaryotic and eukaryotic intercellular pathogens. *Infect. Immun.* 79:2964–2973.
- Danforth, H. D., E. H. Lee, A. Martin, and M. Dekich. 1997. Evaluation of a gel-immunization technique with two different immunocox vaccine formulations in battery and floor-pen trials with broiler chickens. *Parasitol. Res.* 83:445–452.
- Hodgson, J. N. 1970. Coccidiosis: Oocyst counting technique for coccidiostat evaluation. *Exp. Parasit.* 28:99–102.
- Hong, Y. H., H. S. Lillehoj, S. H. Lee, R. A. Dalloul, and E. P. Lillehoj. 2006. Analysis of chicken cytokine and chemokine gene expression following *Eimeria acervulina* and *Eimeria tenella* infections. *Vet. Immunol. Immunopathol.* 114:209–223.
- Jang, S. I., H. S. Lillehoj, S. H. Lee, D. K. Kim, M. Pages, Y. H. Hong, W. Min, and E. P. Lillehoj. 2011. Distinct immunoregulatory properties of macrophage migration inhibitory factors encoded by *Eimeria* parasites and their chicken host. *Vaccine* 29:8998–9004.
- Kominsky, D. J., E. L. Campbell, S. F. Ehrentraut, K. E. Wilson, C. J. Kelly, L. E. Glover, C. B. Collins, A. J. Bayless, B. Saeedi, E. Dobrinskikh, B. E. Bowers, C. F. MacManus, W. Muller, S. P. Colgan, and D. Bruder. 2014. IFN-gamma-mediated induction of an apical IL-10 receptor on polarized intestinal epithelia. *J. Immunol.* 192:1267–1276.
- Konnikova, Y., M. M. Zaman, M. Makda, D. D. D'Onofrio, S. D. Freedman, and C. R. Martin. Late enteral feedings are associated with intestinal inflammation and adverse neonatal outcomes. *PLoS One* 10:e0132924.
- Miska, K. B., R. H. Fetterer, H. S. Lillehoj, M. C. Jenkins, P. C. Allen, and S. B. Harper. 2007. Characterisation of macrophage migration inhibitory factor from *Eimeria* species infectious to chickens. *Mol. Biochem. Parasitol.* 151:173–183.
- Paark, H. K., M. K. Cho, H. Y. Park, K. U. Kim, Y. S. Kim, M. K. Lee, S. K. Park, D. H. Kim, and H. S. Yu. 2012. Macrophage migration inhibitory factor isolated from a parasite inhibited Th2 cytokine production in PBMCs of atopic asthma patients. *J. Asthma.* 49:10–15.
- Rochell, S. J., T. J. Applegate, E. J. Kim, and W. A. Dozier, III. 2012. Effects of diet type and ingredient composition on rate of passage and apparent ileal amino acid digestibility in broiler chicks. *Poult. Sci.* 91:1647–1653.
- Rothwell, L., J. R. Young, R. Zoorob, C. A. Whittaker, P. Hesketh, A. Archer, A. L. Smith, and P. Kaiser. 2004. Cloning and characterization of chicken IL-10 and its role in the immune response to *Eimeria maxima*. *J. Immunol.* 173:2675–2682.
- Shanmugasundaram, R., M. Sifri, and R. Selvaraj. 2013. Effect of yeast cell product (Citristim) supplementation on broiler performance and intestinal immune call parameters during an experimental coccidial infection. *Poult. Sci.* 92:358–363.
- Trifunovic, J., L. Miller, Z. Debeljak, and V. Horvat. 2015. Pathologic patterns of interleukin 10 expression—a review. *Biochem. Med. (Zagreb)* 25:36–48.