



Molecular approach to genetic and epigenetic pathogenesis of early-onset colorectal cancer

Gulcin Tezcan, Berrin Tunca, Secil Ak, Gulsah Cecener, Unal Egeli

Gulcin Tezcan, Berrin Tunca, Secil Ak, Gulsah Cecener, Unal Egeli, Department of Medical Biology, Faculty of Medicine, Uludag University, 16059 Bursa, Turkey

Author contributions: All authors contributed equally to performing literature search and analysing results; Tezcan G and Tunca B wrote the manuscript.

Conflict-of-interest statement: All authors declare no conflicts of interest.

Open-Access: This article is an open-access article which was selected by an in-house editor and fully peer-reviewed by external reviewers. It is distributed in accordance with the Creative Commons Attribution Non Commercial (CC BY-NC 4.0) license, which permits others to distribute, remix, adapt, build upon this work non-commercially, and license their derivative works on different terms, provided the original work is properly cited and the use is non-commercial. See: <http://creativecommons.org/licenses/by-nc/4.0/>

Correspondence to: Berrin Tunca, PhD, Department of Medical Biology, Faculty of Medicine, Uludag University, Görükle Kampüsü, 16059 Bursa, Turkey. btunca@uludag.edu.tr
 Telephone: +90-224-2954161
 Fax: +90-224-4428863

Received: June 24, 2015

Peer-review started: June 28, 2015

First decision: September 17, 2015

Revised: October 1, 2015

Accepted: November 10, 2015

Article in press: November 11, 2015

Published online: January 15, 2016

Abstract

Colorectal cancer (CRC) is the third most frequent cancer type and the incidence of this disease is increasing gradually per year in individuals younger than 50 years old. The current knowledge is that early-onset CRC (EOCRC) cases are heterogeneous population that

includes both hereditary and sporadic forms of the CRC. Although EOCRC cases have some distinguishing clinical and pathological features than elder age CRC, the molecular mechanism underlying the EOCRC is poorly clarified. Given the significance of CRC in the world of medicine, the present review will focus on the recent knowledge in the molecular basis of genetic and epigenetic mechanism of the hereditary forms of EOCRC, which includes Lynch syndrome, Familial CRC type X, Familial adenomatous polyposis, MutYH-associated polyposis, Juvenile polyposis syndrome, Peutz-Jeghers Syndrome and sporadic forms of EOCRC. Recent findings about molecular genetics and epigenetic basis of EOCRC gave rise to new alternative therapy protocols. Although exact diagnosis of these cases still remains complicated, the present review paves way for better predictions and contributes to more accurate diagnostic and therapeutic strategies into clinical approach.

Key words: Early-onset; Colorectal cancer; Epigenetic mechanism; Genetic mechanism; Clinical outcome

© **The Author(s) 2016.** Published by Baishideng Publishing Group Inc. All rights reserved.

Core tip: Early-onset colorectal cancer (EOCRC) cases are heterogeneous population that include both hereditary and sporadic forms of the colorectal cancer (CRC). EOCRC cases have some distinguishing clinical and pathological features than elder age CRC. Recent findings about molecular genetics and epigenetic basis of EOCRC gave rise to new alternative therapy protocols. We herein discuss the latest findings about genetic and epigenetic features of EOCRC.

Tezcan G, Tunca B, Ak S, Cecener G, Egeli U. Molecular approach to genetic and epigenetic pathogenesis of early-onset colorectal cancer. *World J Gastrointest Oncol* 2016; 8(1): 83-98 Available from: URL: <http://www.wjgnet.com/1948-5204/full/v8/i1/83.htm> DOI: <http://dx.doi.org/10.4251/wjgo.v8.i1.83>

INTRODUCTION

Colorectal cancer (CRC) is the third most frequent cancer type and despite improvements in diagnosis and treatment, this disease is the second leading cause of cancer death in developed countries^[1]. The highest incidence of CRC is observed in Western Europe, North America and Australia in western populations. It is notable that although the rate of this disease is relatively lower in the communities of the sub-Saharan Africa, South America and Asia, the rate is gradually increasing depending on assimilating life-style and dietary habits of the western countries^[2]. In more developed countries, screening programs for 50 years and elder people leads to early detection of CRC and opportunity for more satisfactory treatments; thus, death rates reduced approximately 2% per year^[3-5]. However, CRC screening is not common for young adults (between 20-40 ages), the incidence of this disease is increasing gradually per year in individuals younger than 50 years^[6]. The tumors of early-onset patients are more aggressive than elder cases^[7,8].

Because of the advances in our understanding concerning the molecular mechanism of elder age CRC, we can describe the presenting phenotype depending on the molecular characteristics of the tumor in majority of the cases^[9]. This vital knowledge contributes to the available studies in the literature for individual-specific and targeted therapies for CRC patients related to their drug responses. However, the molecular mechanism underlying the early-onset CRC (EOCRC) is poorly clarified in the relevant literature. Recent studies have revealed that EOCRC might evolve in a different pathway and the molecular basis of these cases may be unique for individuals^[10]. Therefore, determining identifiable markers of this disease for early diagnoses is required to develop unique treatment protocols and increase the survival of the patients. However, to date, little knowledge has been gained about the molecular basis of young age. Given this gap to be highlighted, the aim of our review is to synthesize and evaluate the current literature regarding the genetic and epigenetic pathogenesis of EOCRC at molecular level.

MOLECULAR PATHOGENESIS OF EOCRC

In comparison to elder CRC, EOCRC cases have some distinguishing clinical and pathological features^[11,12]. These tumors are pathologically recognized with low-grade tumor differentiation, mucinous component and high signet ring cells frequency^[11,13]. Polyp development is contently observed during the follow-up period of EOCRC^[10]. The majority of early-onset tumors occur in the distal colon and the rectum^[14]. Previous studies underlined the significance of heritage as an indicator of EOCRC^[11,12]. Supporting these views, early-onset and hereditary forms of CRC demonstrate similar well-known pathological features^[11,13]. Nevertheless, the current knowledge is that EOCRC is a heterogeneous disease

with both familial and sporadic cases. The molecular basis of this heterogeneity has not yet been fully clarified in the literature, however, the severe histopathological properties and a possible genetic feature of the tumor may predispose to expedited tumor growth in young age patients as reported^[15,16].

HEREDITARY FORMS OF EOCRC

In the hereditary forms of CRC, the disease can be observed in one or more first and/or second degree relatives of the patient. Thus, familial CRC counts approximately 20% of all CRC patients^[17]. With almost 3% observation rate, the most frequently occurring familial CRC is Lynch syndrome (LS)^[18]. On the other hand, polyposis syndromes, such as familial adenomatous polyposis (FAP), MUTYH-associated polyposis (MAP), Juvenile polyposis syndrome (JPS) and Peutz-Jeghers syndrome (PJS), are less often observed familial colorectal syndromes^[17].

LS

LS is frequently right-sided, an autosomal dominant cancer predisposition. The majority of these tumors are synchronous and metachronous. Extracolonic sites of patients, such as brain, ovary, endometrium, renal pelvis, ureter, stomach, small intestine and skin, are also among a high cancer risk^[18]. LS is caused by various germline DNA mismatch repair (*MMR*) gene mutations^[19-21]. Approximately 90% of the identified LS mutations are observed in *MLH1* or *MSH2* genes and approximately 10% of the LS mutations were identified in *MSH6* and *PMS2* genes^[17,22]. The prevalence and characteristics of these mutations vary widely among populations. In 2010, we defined two frame-shift mutations (*MLH1* c.1843dupC and *MLH1* c.1743delG) and three missense mutations (*MLH1* c.293G < C, *MLH1* c.954_955delinsTA and *MSH2* c.2210G < A) uniquely in Turkish LS cases^[23]. In a study of Italian LS families, c.643_648 dupA, c.2156_2157 dupT, c.684_685 dupC and c.1701_1704 delT frameshift mutations and c.2206 G < T, that cause a truncating protein were first time determined in *MLH1* gene. Other truncating protein causing mutations, c.1089 G < T and c.2634-2 A < G, that results with a splice defect was originally reported in *MSH2* gene^[24]. In Malaysia population, two novel mutations, c.3341_3342insC and c.3885_3891delTAAAAGC were characterized in *MSH6* and c.2395C > T mutation was defined in *PMS2* gene^[25]. Recently, an unidentified mutation of *MLH1*, c.2044_2045del was linked to LS in a Caribbean Hispanic family^[26].

Deficient MMR function of LS cases usually promotes microsatellite instability (MSI)^[27,28]. MSI is characterized by length alterations within simple repeated sequences that are called microsatellites^[28]. MSI is essential for deregulation of cell growth, differentiation and death^[29]. MSI also plays roles in modulating the response of patients to various chemotherapeutic agents^[27]. Losing the expression of MMR proteins *via* inactivation of MMR-

Table 1 MiRNA profile of lynch syndrome patients

MiRNA	Expression status	Function	Ref.
miR-155	Up	MMR deficiency	Valeri <i>et al</i> ^[46]
		MSI	Earle <i>et al</i> ^[48]
miR-26b	Down	MSS	Earle <i>et al</i> ^[48]
miR-31	Up	MSI	Earle <i>et al</i> ^[48]
miR-223	Up	MSI	Earle <i>et al</i> ^[48]
miR-486-5p	Down	MSI	Balaguer <i>et al</i> ^[47]
miR-622	Up	MSI	Balaguer <i>et al</i> ^[47]
miR-1238	Up	MSI	Balaguer <i>et al</i> ^[47]
miR-1362-5p	Down	MSI	Balaguer <i>et al</i> ^[47]
miR-132	Down	MMR deficiency	Kaur <i>et al</i> ^[49]
miR-345	Down	MMR deficiency	Kaur <i>et al</i> ^[49]

MSS: Microsatellite stable; MSI: Microsatellite instability; MMR: Mismatch repair.

deficient crypt foci genes causes an MSI phenotype^[30]. In these patients, the mutation rates of *ACVR2*, *TAF1B* and *ASTE1*, microsatellite-bearing target genes are higher than 80%^[29-33]. Recent studies indicated that in MSI cases, frameshift mutations of apoptotic genes, such as *APAF1*, *BAX* and *FLASH*, lead to intratumoral heterogeneity^[28]. The study of Markowitz *et al*^[34] demonstrated the relation with DNA repair defects with a specific pathway of CRC progression and three different mutation of *TGFBR2* gene in 1995^[34]. However, the latest study of de Miranda *et al*^[35] showed the transcription and translation of *TGFBR2* with a 1 nucleotide deletion at its microsatellite sequence still produced a functional *TGFBR2* protein. This protein is required for phosphorylation of *SMAD2*, which is phosphorylated in most of the MSI CRC tissues^[35].

The *MMR* gene modifications of LS occur by two hit usually point mutations or large rearrangements may give rise to the first hit. Accordingly, gene conversion or loss of the wild-type allele evokes the second hit^[36]. However, recent observations demonstrated the high rate of promoter methylation occurrence as the second hit^[37,38]. These findings emphasize the role of epigenetic events in formation of LS^[37,38]. Indeed, depending on the studies, germ line hemiallelic methylation of *MLH1* and epimutations of *MSH2* lead to LS with insufficient *MLH1* or *MSH2* protein expression in mutation negative families^[39-42]. Ligtenberg *et al*^[43] state that germ line 3' end deletions of *EPCAM* gene that is located upstream of *MSH2*, correlate with MSI and a loss of *MSH2* protein even though there was no identifiable mutation in *MSH2* gene^[44]. Kuiper *et al*^[44] found *EPCAM* deletions in approximately 2.3% of *MSH2*-deficient families. This study affirms the epigenetic transgenerational inheritance and the possibility of aberrant promoter methylation occurrence in neighbouring tumor suppressor genes by loosing of polyadenylation signals^[28]. In addition, current evidence in the empirical studies supports the role of miRNAs that is responsible for translational rearrangement of proteins, in regulation of MMR genes expressions^[45]. In comparison to sporadic MSI tumors, LS patients have a typical miRNA profile. Valeri *et al*^[46]

demonstrated the association of reduced expression of *MSH2*, *MLH1* and *MSH6* and induction of a mutator phenotype and MSI with over expression of miR-155 in LS. In another study, Balaguer *et al*^[47] determined the up-regulation of miR-622 and miR-1238 in these patients. MSI status modulates the miRNA expression levels^[48]. Earle *et al*^[48] defined the increased expression of miR-155, miR-31, miR-223 and miR-26b in MSI tumors. In addition, Earle *et al*^[48] linked over expression of miR-31 and miR-223 to LS. Not only miRNA regulates gene expression in an epigenetic way but also miRNA expressions may be regulated epigenetically. With containing a CpG island in the promoter region, most of the miRNAs are favorable for aberrant methylation which can give rise to dysregulation of miRNA^[49,50]. Kaur *et al*^[49] identified a correlation between miR-345 and miR-132 hypermethylation and MMR deficiency (Table 1).

Familial CRC type X

MMR germline mutations are observed in approximately 60% of the families, fulfilling clinical criteria for LS^[51]. Although familial colorectal cancer type X (FCCTX) accomplish the same clinical criteria with LS, the morphological features, such as right-sided tumor location, poor differentiation, expansive growth pattern, tumor-infiltrating lymphocytes, peritumorous lymphocytes, Crohn-like reactions and lack of dirty necrosis, are not common in FCCTX as LS^[52]. In addition, despite these, families demonstrate clinical features in which CRCs with MSI, FCCTX is not related to germline MMR gene mutations^[51,53]. The age onset of FCCTX is relatively older than LS cases and this disease differ from LS with the tumorigenic pathways^[54,55]. Basically, two individual molecular pathways involve in these families. One of these pathways is loosing of tumor suppressor gene loci genes, such as *TP53*, *APC*, *SMAD4* and *DCC*, somatic mutations of *APC* and *KRAS* and *MGMT* promoter methylation. At the second partway, there is no loosing of tumor suppressor gene loci genes and rarely presenting promoter methylation^[56]. Therikildsen *et al*^[57] linked to FCCTX tumors with gain of genetic material in two separate regions encompassing, 20q12-13.12 and 20q13.2-13.32. This study revealed that gain of material on chromosome 20q and loss on chromosome 18 differentiate FCCTX from LS. Findings of Dominguez-Valentin *et al*^[58] showed that gaining mutations of *GNAS* gene which is located in 20q13.32 and encodes for the G α -subunit may cause FCCTX *via* activation of the Wnt and ERK1/2 MAPK signalling pathways. Moreover, other 20q located genes, *CDH26*, *SRC* and *ASIP* that play role in proliferation and migration may have a potential to cause FCCTX^[58]. Dominguez-Valentin *et al*^[58] defined the up-regulation of *PTGER1* in these tumors which can cause tumor growth through altered prostaglandin E2 function^[59,60]. Recently, an *SEMA4A* gene variant c.232G > A was determined in Austrian kindred with FCCTX. This study revealed that *SEMA4A* (V78M) lead to activation of MAPK/Erk and PI3K/Akt signaling. Moreover, *SEMA4A* mutations, c.1451G > C and c.977C > T and the single-nucleotide polymorphism c.2044C

Table 2 Molecular characterization of familial colorectal cancer type X patients

Molecular features		Ref.
Germline <i>MMR</i> gene mutations	-	Lindor <i>et al</i> ^[51] Klarskov <i>et al</i> ^[52] Sánchez-Tomé <i>et al</i> ^[53]
Tumor suppressor gene loci loss		
<i>APC</i> mutations	77%	Francisco <i>et al</i> ^[56]
<i>KRAS</i> mutations	46%	Francisco <i>et al</i> ^[56]
<i>MGMT</i> methylation	36%	Francisco <i>et al</i> ^[56]
Chromosome gains	20q, 19 and 17	Therkildsen <i>et al</i> ^[57]
Chromosome loss	8p, 15, 18	Therkildsen <i>et al</i> ^[57]
Signaling by G protein coupled receptor	up-regulated	Dominguez-Valentin <i>et al</i> ^[58]
(<i>GNAS</i> , <i>F2R</i> , <i>F2RL2</i> , <i>EDN1</i> , <i>EDNRA</i> , <i>GRM8</i> , <i>GNA2</i> , <i>GNG11</i> , <i>GNG12</i> , <i>HCRT</i> , <i>PTGER1</i> , <i>P2RY2</i> , <i>RAMP2</i> , <i>MC1R</i> , <i>TUBB3</i> , <i>VIP</i>)		
<i>SEMA4A</i> variants		Schulz <i>et al</i> ^[61]

> T were determined as associated with the FCCTX phenotype^[61]. Recent knowledge about the molecular characterization of FCCTX is summarized in Table 2.

FAP

FAP is an autosomal dominant cancer syndrome^[62]. FAP is diagnosed with 100 or more adenomatous polyps in colon or rectum in patients with younger than 40 age^[62]. Patients with FAP carry germline mutations of the adenomatous polyposis coli (*APC*) gene located on chromosome 5q21-q22^[63]. *APC* protein is a large scaffolding protein which involves in Wnt signaling pathway. In this protein complex, *APC* leads to down regulation of b-catenin activity and play a central role in a destruction complex of Axin, GSK-3 β and casein kinase 1. This complex directs a series of phosphorylation events on β -catenin that target it for ubiquitination and subsequent proteolysis^[64]. In the absence of *APC* protein, b-catenin binds to several transcription factors of the TCF/LEF and initiates the altered expression of genes associated with proliferation, differentiation, migration and apoptosis. Moreover, the depletion of *APC* can lead to abnormal chromosome segregation and aberrant mitosis^[65,66]. FAP occurs when there are mutations between codons 168-1580 and with severe disease between codons 1250-1464 of *APC* gene^[67,68]. The majority of *APC* mutations are either frameshift or nonsense mutations resulting in a truncated protein^[69]. The two most frequently described germline mutations are located at codon 1309 (c3927_3931delAAAGA) and codon 1061 (c.3183_87delACAAA)^[70]. Although two-thirds of FAP patient disease is inherited, the rest of the cases have no family history and carry unique mutations. Almost all *APC* mutations results with a colonic phenotype but variable for extra-colonic manifestations, such as desmoid tumor, hepatoblastoma, thyroid carcinoma, medulloblastoma, a litany of benign lesions and brain tumors, particularly medulloblastomas^[71-73]. Lamberti *et al*^[74] found that *GSTT1* polymorphism showed an uncertain association

with extra-intestinal manifestations in a study of 411 FAP patients. Recent studies demonstrated the enrichment of pyloric gland adenomas of the stomach, in addition to fundic gland polyps and foveolar-type adenomas in patients with FAP^[75,76]. Hashimoto *et al*^[75] analyzed the genetic alterations in these FAP-associated gastric lesions and they demonstrated that, as well as *APC* mutations, these cases had *GNAS* and *KRAS* mutations.

KRAS mutations have been observed in the early development of approximately 40% of colon cancers. Simultaneous *APC* depletion and *KRAS* mutation results with an augmentation in adenomas^[76] and induce the spread of stem cell marker carrying cells within the tumor epithelium^[77]. Phelps *et al*^[78] stated that in FAP adenomas, intestinal differentiation is required two consecutive steps. In the first step, after *APC* loss, CtBP1 contributes to adenoma initiation and in the following step, *KRAS* activation and β -catenin nuclear localization promote adenoma progression to carcinomas. On the other hand, Obrador-Hevia *et al*^[79] analysed somatic *APC* and *KRAS* mutations, beta-catenin immunostaining, and qRT-PCR of *APC*, *MYC*, *AXIN2* and *SFRP1* genes in sixty adenomas from six FAP patients with known pathogenic *APC* mutations. Based on this study, the Wnt pathway was constitutively activated in all *APC*-FAP tumors, with alterations occurring both upstream and downstream of *APC*. Thus, Obrador-Hevia *et al*^[79] suggest that for Wnt signalling activation in *APC*-associated FAP adenomas, oncogenic *KRAS* is not essential.

FAP may also pursue a different way to Wnt signalling pathway alterations though epigenetic mechanisms. Although epigenetic alterations of Wnt signalling are an effective factor for FAP formation, *APC* mutations exist in almost all FAP patients. Romero-Giménez *et al*^[80] evaluated the possible role of germline hypermethylation of the *APC* promoter in FAP families that were negative for *APC* mutations in 21 FAP families and they did not identify signs of abnormal promoter methylation, indicating that this form of epigenetic silencing is not a common cause of FAP. However, Kámory *et al*^[81] observed promoter hypermethylation that causes somatic inactivation of *APC* in 21 sporadic cases (30%). In the study of Zhang *et al*^[82] within FAP families, although methylation was not present in normal tissues, hypermethylation was determined in tumor tissues of one proband and her son. In addition, loss of heterozygosity was observed in another patient from the same FAP family. Segditsas *et al*^[83] declared similar findings with Zhang *et al*^[82] They detected *APC* promoter methylation in 27%-45% of colorectal tumors and cell lines but did not detect in normal colorectum. However, they substantially observed that methylation was independent of the *APC* mutations and was not associated with the CpG island methylator phenotype. Although methylation caused the loosing of 1A isoform mRNA and a reduction in total *APC* transcript levels, *APC* gene expression was retained from promoter 1B^[83]. Moreover, a recent study of Pavicic demonstrated that promoter 1B deletions of *APC* are not very common^[84]. Thus, all these studies imply that

Table 3 Genetic and epigenetic alterations of familial adenomatous polyposis patients besides adenomatous polyposis coli

Gene	Alteration	Ref.
	<i>GNAS</i>	Mutation Hashimoto <i>et al</i> ^[75]
	<i>MYC</i>	Gene activation Obrador-Hevia <i>et al</i> ^[79]
	<i>AXIN2</i>	Gene activation Obrador-Hevia <i>et al</i> ^[79]
	<i>SFRP1</i>	Gene activation Obrador-Hevia <i>et al</i> ^[79]
	<i>GSTT1</i>	Polymorphism Lamberti <i>et al</i> ^[74]
	<i>MGMT</i>	Methylation Wynter <i>et al</i> ^[86]
	<i>p14ARF</i>	Methylation Wynter <i>et al</i> ^[86]
	<i>p16INK4</i>	Methylation Wynter <i>et al</i> ^[86]
	<i>IGSF4</i>	Methylation Berkhout <i>et al</i> ^[85]
	<i>TIMP3</i>	Methylation Berkhout <i>et al</i> ^[85]
	<i>ESR1</i>	Methylation Berkhout <i>et al</i> ^[85]
	<i>CDH13</i>	Methylation Berkhout <i>et al</i> ^[85]
miRNA	miR-143	Down regulation Kamatani <i>et al</i> ^[87]
	miR-145	Down regulation Kamatani <i>et al</i> ^[87]
	miR-126	Down regulation Yamaguchi <i>et al</i> ^[88]
	miR-20b	Down regulation Yamaguchi <i>et al</i> ^[88]

even though *APC* promoter methylation occurs in early during colon neoplasia progression, it does not result in complete gene inactivation or act as a "second hit" and promoter-specific alterations of *APC* rarely leads to mutation-negative FAP^[84].

In addition to *APC*, hypermethylation of other genes are usually observed in both FAP-related and sporadic duodenal carcinomas^[85]. Wynter *et al*^[86] study showed that the methylation of *MGMT*, *p14ARF* and *p16INK4* genes promoter regions are frequently observed in both sporadic and familial adenomas. Berkhout *et al*^[85] defined the high methylation rate of the *IGSF4*, *TIMP3*, *ESR1*, *APC* and *CDH13*, in both of these cases, however, in the same study, *PAX6* gene was determined as hypermethylated only in FAP-related carcinomas. Recently, the role of altered miRNA expression in Wnt signalling regulation and FAP development has also been evaluated. Lately, the studies indicated the decreased expression of miR-143, miR-145, miR-126 and miR-20b as an early event of colorectal carcinogenesis in FAP tumors^[87,88]. Specifically, miR-126 and miR-20b play role in angiogenesis^[88]. Thus, downregulation of these miRNAs is an important genetic event for the initiation step in colorectal tumor development^[87]. Besides *APC* alterations, other genetic and epigenetic events determined in FAP patients were summarized in Table 3.

MAP

MAP is an autosomal recessive polyposis syndrome. Approximately 0.3%-1% of all CRCs is associated with MAP^[89,90]. Cases with MAP typically present multiple colon adenomas, thus at the first glance, these cases may be diagnosed as FAP. However, because they also can have *MMR* gene mutations, it can reverberate to phenotype as LS^[91]. Although existing of multiple colon adenomas, there is not any alteration in *APC* gene of these cases, but further analyses identified mutations in

Table 4 *MUTYH* mutations that vary with ethnicity

<i>MUTYH</i> mutation	Ethnicity	Ref.
c.231 C > T	Japan	Miyaki <i>et al</i> ^[99]
c.934-2A > C	Japan	Miyaki <i>et al</i> ^[99]
c.1376C > A	Finland	Alhopuro <i>et al</i> ^[100]
c.933 + 3A > C	North-Eastern Italy, Germany	Pin <i>et al</i> ^[101]
c.536A > G	Caucasians	Yamaguchi <i>et al</i> ^[92]
c.1187 G > A	Caucasians	Yamaguchi <i>et al</i> ^[92]

MUTYH gene which is a component of a base excision repair system and involves in protecting DNA from oxidative damage^[92]. Farrington *et al*^[93] reported that mutations of both *MUTYH* gene alleles increase the risk of endometrial tumors. These cases are rare and well known *MUTYH* mutations are linked to this disease are c.494A > G and c.1145G > A^[94-96]. However, *MUTYH* mutations can vary with ethnicity^[97]. c.536A > G and c.1187G > A in Caucasians, c.231 C > T and c.934-2A > C in Japan, c.1227_1228dup in Portugal, c.1376C > A in Finland were determined as the most frequent *MUTYH* mutations^[98-100]. In the North-Eastern Italy, c.933+3A > C (IVS10 + 3A > C), accounts for nearly 1/5 of all *MUTYH* mutations^[101]. In addition, because this mutation is also common in Germany, it is supposed to have a common origin in Western Europe^[101]. *MUTYH* mutations that vary with ethnicity are summarized in Table 4.

Germline *MUTYH* mutations may also lead to the mutation of cancer-related genes, such as the *APC* and/or the *KRAS* genes, *via* G to T transversion^[92]. In the study of Venesio *et al*^[102], mutated *MUTYH*-associated-polyposis adenomas exhibited only c.34G > T transversion in codon 12, or mutations in codon 13. They affirm that neither of these mutations was found in classical/attenuated familial polyposis adenomas.

JPS

JPS is a rare autosomal dominant disorder. JPS is diagnosed with numerous colon and rectum polyps or polyps with family history or juvenile polyps inside and outside of the intestine^[103]. 20%-50% of JPS demonstrates familial pattern and the average disease onset of cases are 16 to 18^[103]. JPS may coexist with Osler-Weber-Rendu syndrome [hereditary hemorrhagic telangiectasia (HHT)]. The most frequently encountered symptoms of HHT are Skin telangiectasia, epistaxis, intracranial haemorrhage, development of pulmonary arteriovenous fistulas, brain cavernous angioma and haemangioma^[104]. Almost 60% of JPS cases demonstrate mutations in *SMAD4* and *BMPRIA* genes that are connected with TGF- β /BMP signal pathway^[105].

To date, a number of mutations leading JPS and/or HHT have been described in *SMAD4* gene. These mutations include point mutations that are resulting with a stop codon or a change in the coded amino acid into another one, codons 361, 533 and 534 mutations, small deletions and insertions^[103]. Specifically, Howe *et al*^[106] determined the mutation, c.1244-1247delAGAC, in the hot spot of the *SMAD4* gene which leads to a

Table 5 Pathogenic germline mutations of juvenile polyposis syndrome

Mutation	Effect	Ref.
<i>SMAD4</i> c.1244-1247delAGAC	Hotspot mutation serious course of JPS with numerous cases of polyps, tumors located in the stomach and intestines	Howe <i>et al</i> ^[106]
<i>BMPRIA</i> c.230+452_333+441dup 1995	Frameshift mutation producing a truncated protein (p.D112NfsX2)	Yamaguchi <i>et al</i> ^[107]

JPS: Juvenile polyposis syndrome.

serious course of JPS with numerous cases of polyps and tumors located in the stomach and intestines. In addition, a considerable proportion of mutations in the *BMPRIA* gene are nucleotide changes generating a stop codon (nonsense) or leading to amino acid changes (missense). These mutations are distributed evenly in the entire gene sequence, intronic mutations (intron 1, 3, 4 and 5) and deletions between codon 224 and 359^[103]. Yamaguchi *et al*^[107] identified a *BMPRIA* mutation, which involves a duplication of coding exon 3 (c.230+452_333+441dup1995) that causes a frameshift mutation, producing a truncated protein (p.D112NfsX2) in a patient with JPS (Table 5).

In addition to mutations in *SMAD4* and *BMPRIA* genes, Juvenile polyps also was observed in Cowden, Bannayan-Zonana, and Gorlin syndromes. Cowden and Bannayan-Zonana syndromes is occurred by *PTEN* mutations and Gorlin syndrome develops *via* germline *PTCH* mutations. *PTEN* and *PTCH* mutations have been excluded as the causative mutations in almost all JPS patients^[108-110].

To the best of our knowledge, there is a lack of knowledge about epigenetic regulation of JPS so far. However, recently, Ling *et al*^[111] defined *SMAD4* as a miR-224 target as a metastasis factor, yet the relation of miR-224 and *SMAD4* expression in formation of juvenile polyps has not been clarified.

PJS

PJS is a rare (approximately 1 in 200000 observation rate) autosomal dominant disease^[112,113]. PJS is characterized by occurrence of benign hamartomatous, Peutz-Jeghers-type polyps in the gastrointestinal tract in association with mucocutaneous pigmentation on the lips and oral mucosa^[114]. PJS is diagnosed with presence of a hamartoma associated with two of the following three signs: Family history of PJS, mucocutaneous lentiginosis or polyposis of the small-bowel^[115]. PJS patients face with abdominal symptoms during the first 10 years of life, almost 50% of patients experience the symptoms before the age of 20 years and they have an increased risk of developing gastrointestinal and extradigestive cancers^[115-117]. Cancer development localized in small intestine, stomach, pancreas and colon in most of the cases^[116]. In 93% of the affected individuals, there is a

risk of developing complicating cancers between aged 15-64 years^[116].

Percent of eighty to 90% of patients with PJS have family history^[118] and according to genetic analysis, 40%-60% of these cases have germline *STK11* (also known as *LKB1*) mutations as the major cause of this disease^[112]. Because the downstream signalling pathway of *STK11* has not been fully clarified, the knowledge about the mechanism of hamartomatous polyp formation and mucocutaneous pigmentation also insufficient at present. Studies demonstrated that induced *COX-2* gene expression has also been involved in the promotion of tumor formation from PJS polyps^[119,120]. On the other hand, PJS cases with wild-type *STK11* demonstrates multiple causative loci such as chromosome1p, a pericentric inversion in chromosome 6, a second PJS locus at 19q13.4 and a heterozygous germline mutation in the *MYH11* gene^[121-125]. Lately, Wang *et al*^[121] performed sequence analysing in three Chinese individuals with PJS and identified 2 variants, *OR4C45* c.767-768insAG and *ZAN* c.5767insG, which occur in PJS cases independently of *STK11*.

More than 145 different *STK11* germline mutations have been reported in the literature result in a truncated premature protein or in transcriptional splicing errors^[121,126-129] (Table 6). On the other hand, transcriptional silencing of this tumor suppressor gene by promoter hypermethylation has been shown as an alternative inactivation mechanism^[130-133]. In addition to germline mutations, and promoter methylation, Wang *et al*^[121] discovered four mutations in pre-microRNAs, *MI0003131*, *MI0003530*, *MI0014206*, and *MI0005525*, of which the corresponding mature miRNA, *hsa-mir-492*, *hsa-mir-487b*, *hsa-mir-323b*, *hsa-mir-300* respectively.

SPORADIC FORMS OF EOCRC

The most well-defined hereditary form of CRC, LS, account for 2%-4% of total CRC and one-third of EOCRC cases^[134,135]. FAP cases are observed in less than 1% frequency in total CRC cases. Thus, 70% of all CRC and the majority of EOCRC cases are introduced in sporadic form^[136-138]. Sporadic EOCRCs are classified into two major groups. Chromosome unstable CRC (CIN) is characterized by gross chromosomal abnormalities and MSI^[135]. Although MSI tumors behave less aggressively compared to CIN, CIN or MSI tumors do not always appear separately^[139-141].

Sporadic EOCRC are morphologically characterized with poor cell differentiation, colloid component and lymphocytic stromal reaction^[8,12,142]. Therefore, these cases are likely to be confused with LS patients. However, while MMR defects are observed *via* MSI pathway in LS, in sporadic cases MSI is not frequent. Studies to date imply that colorectal tumors characterized by MSI may be distinct from microsatellite stabile (MSS) tumors in many molecular aspects, such as an association with the methylator phenotype, a higher frequency of *BRAF* mutations and a lower frequency of *KRAS*, *APC*, and *TP53* mutations. Thus, MSI and MSS colon tumors

Table 6 *STK11* mutations associated with colorectal cancer caused by peutz-jeghers syndrome

<i>STK11</i> mutation	Mutation type	Effect on protein	Ref.
c.511 G > A	Missense mutation	G171S	Dong <i>et al</i> ^[127]
c.595 G > A	Missense mutation	E199K	Dong <i>et al</i> ^[127]
c.622 G > A	Missense mutation	D208N	Dong <i>et al</i> ^[127]
c.644 G > A	Missense mutation	G215D	Dong <i>et al</i> ^[127]
c.941 C > A	Missense mutation	P314H	Resta <i>et al</i> ^[128]
c.1062 C > G	Missense mutation	F354L	Dong <i>et al</i> ^[127]
c.1100 C > T	Missense mutation	T367M	Dong <i>et al</i> ^[127]
c.842delC	Frameshift mutation	truncates	Dong <i>et al</i> ^[127] , Bartosova <i>et al</i> ^[129]
IVS2 + 1A > G	Intronic splice site mutation		Bartosova <i>et al</i> ^[129]
OR4C45 c.767-768insAG	Frameshift mutation	truncates	Wang <i>et al</i> ^[121]
ZAN c.5767insG	Frameshift mutation	truncates	Wang <i>et al</i> ^[121]

originate from different molecular backgrounds^[143]. In sporadic cases, MMR deficiency occurs mainly through epigenetic inactivation of the *MLH1* gene through biallelic promoter methylation instead of MSI^[136]. Both genetic and epigenetic inactivation of MMR genes result in a mutator phenotype, mutations in cancer related genes and CRC development^[144]. Kirzin *et al*^[137] identified *CTNWB1* as one of the most over-expressed genes in MSS-young patients compared to MSS-old patients and this leads to an over-activation of beta catenin in sporadic EOCRC. In addition, Fernandez-Rozadilla *et al*^[145] determined a heterozygous deletion in the 10q22-q23 region involving *BMPRI1A* gene of EOCRC cases with MMR proficiency. According to Luo *et al*^[146] CDC42, TEX11, QKI, CAV1 and FN1 proteins are representative elements of EOCRC specific networks. Moreover, we defined *REG1A*, *CK20* and *MAP3K8* gene expressions strongly upregulated (more than twofold) in early-onset MSS CRC compared with MSI CRC tumors^[147]. *CK20* expression is observed in the majority of colorectal tumors^[148,149], however, a limited number of studies have evaluated the relationship between *CK20* expression levels and MSI status^[147]. In one study, it was suggested that reduced or absent *CK20* expression in CRC is associated with both sporadic and hereditary MSI^[150]. In another study associated with EOCRC, *CK20* expression levels were also identified as relatively reduced in MSI tumors^[10]. It was determined that *CK20* expression levels are inversely correlated with numbers of aberrant microsatellite locus^[150]. We determined the upregulation of *CK20* expression levels in MSS tumors compared with MSI-low (MSI-L) and MSI-high (MSI-H) tumors^[150]. According to McGregor *et al*^[150] regulation of *CK20* gene expression involves molecular pathways that are altered by MSI-H. We defined 3.98-fold high *CK20* gene expression levels in MSS tumors with lymph nodes metastases than in MSI tumors with lymph nodes metastases^[147]. In addition, 17.5-fold upregulation was identified in *CK20* expression levels in low-grade MSS tumors of patients with recurrence and distant metastases^[147]. These results indicate that upregulation of *CK20* expression, specifically, is related to poor prognosis in patients with MSS tumors. Therefore, the results of our study indicate that *CK20* expression in MSS tumors allows for the determination

of the biological characteristics of EOCRC tissues^[147]. The encoded protein by *MAP3K8* gene is a member of the serine/threonine protein kinase family. In one of our study, *MAP3K8* expression in CRC was determined significantly elevated compared with normal mucosa^[149]. In addition, we determined *MAP3K8* expression levels more than two fold upregulated in early-onset MSS CRC compared with MSI CRC tumors^[147]. *MAP3K8* expression levels were significantly higher in the MSS tumors of patients with a short median survival. Thus, our observations revealed that upregulated *MAP3K8* expression was associated with a poor prognosis in patients with MSS tumors^[147]. Human *REG1A* belongs to the superfamily of calcium-dependent lectins. In several previous studies, *REG1A* was found to be upregulated in CRC^[151-153]. We also found that *REG1A* is upregulated in the tumors of early-onset sporadic CRC patients. Furthermore, 25.8-fold high *REG1A* gene expression levels were observed in MSS tumors with lymph nodes metastases. In addition, median survival and disease-free survival were significantly longer only for patients with MSI tumors with low *REG1A* expression compared with those with high expression of this gene. This result indicates that upregulated *REG1A* expression may be related to sporadic EOCRC tumor formation and characterization^[147]. Additionally, a recent study from Sengupta *et al*^[154] defined a relation with MSS CRC tumors and deletion in *RBFOX1* gene which encodes a highly conserved RNA-binding protein that regulates tissue-specific alternative splicing indicating important basic functions in development and differentiation in a British Bangladeshi MSS CRC population. This study showed that loss of *RBFOX1* activity may lead to aberrations in the splicing of genes associated with CRC^[154].

Different from MSS tumors, some sporadic EOCRC tumors belong to the MSI pathway^[28]. Sporadic EOCRC with MSI is likely to arise from sessile serrated polyps through the serrated neoplastic pathway^[155]. The *BRAF* gene, which plays an important role in the mitogen-activated protein kinase signalling pathway, is frequently mutated in these cases. *BRAF* V600E mutation is widely accepted as a prognostic factor of sporadic CRC with MSI and methylated *MLH1*^[156]. Although the frequency of *BRAF* V600E mutation is high in MSI tumors, this mut-

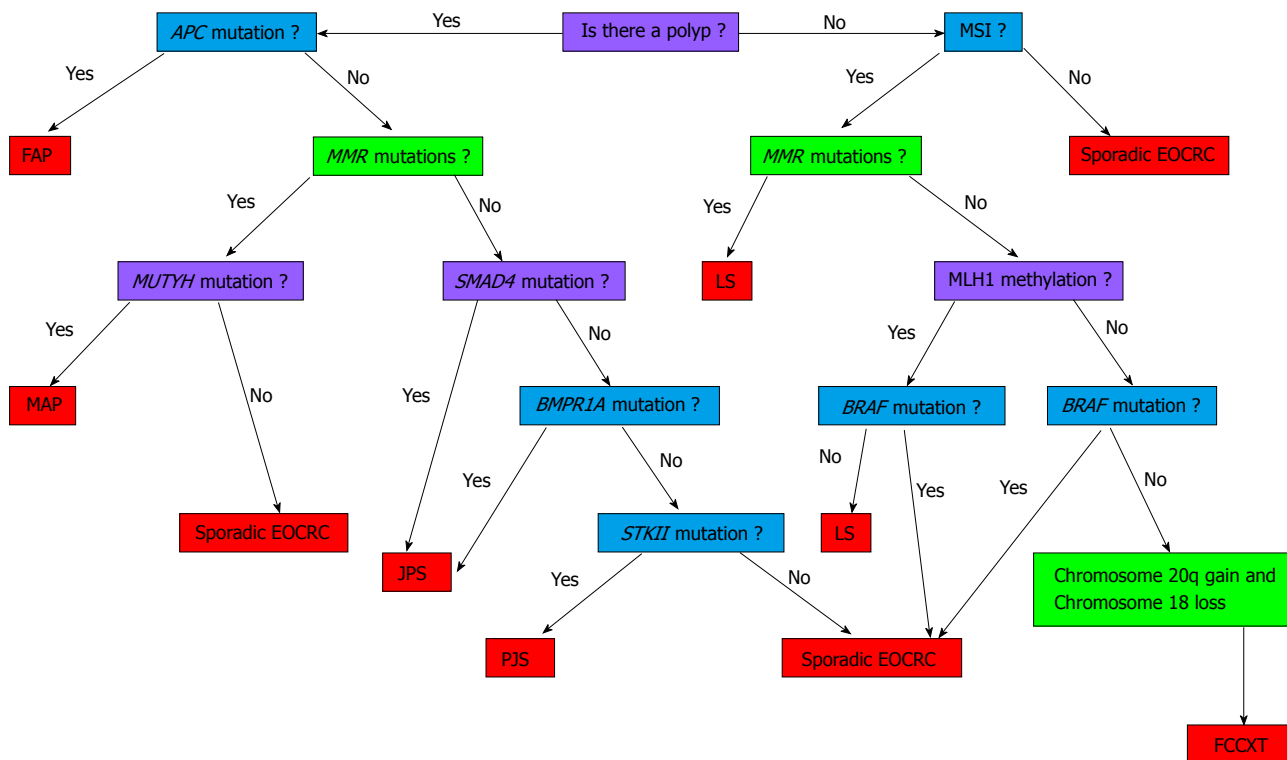


Figure 1 Genetic algorithm of early-onset colorectal cancer. MMR: Mismatch repair; EOCRC: Early-onset colorectal cancer; MSI: Microsatellite instability; APC: Adenomatous polyposis coli; FAP: Familial adenomatous polyposis; MAP: MUTYH-associated polyposis; LS: Lynch syndrome; JPS: Juvenile polyposis syndrome; PJS: Peutz-jeghers syndrome.

ation is not observed in LS cases, thus, this discrepancy between sporadic MSI cancer and LS might be used in a strategy for the detection of LS^[156].

The different attitude of sporadic and hereditary forms of EOCRC may also be caused by epigenetic modifications, such as miRNA expressions and their methylation patterns^[47,157]. Balaguer *et al.*^[47] demonstrated that miR-622, miR-362-5p and miR-486-5p could accurately classify the LS and sporadic MSI cases. The similarity of miRNA expression status of LS and sporadic MSI cases may be explained with occurrence of frameshift mutations in *TARBP2*, a miRNA processing gene, in both of these diseases^[158]. Moreover, in one of our study, using miRNA polymerase chain reaction arrays, the expression profiles of 38 different miRNAs associated with CRC were evaluated in 40 sporadic Turkish EOCRC patients^[157]. The expression of miR-106a was found to be upregulated, and miR-143 and miR-125b levels were found to be downregulated in sporadic EOCRC tissues compared with the normal tissues. In addition, 2.42-fold high expression level of miR-106a and 2.42-fold low expression level of miR-125b were observed in tumors with lymph node metastases compared with the normal colorectal mucosa samples^[157]. On the other hand, epigenetic regulations of sporadic EOCRC tumors also differ between each other depend on MSI status. Earle *et al.*^[48] described the different expression profile of miR-223, miR-155, and miR-92 between MSI and MSS CRCs. So far, Kaur *et al.*^[49] have investigated the association of miR-132 methylation and sporadic MSI CRC tumors located in

the proximal colon in a comparative study of Finnish and Australian population. In addition, different from MSS tumors, hypermethylation of miR-345 had a significant association with sporadic MSI in Finnish CRCs^[49].

CLINICAL OUTCOME OF GENETIC AND EPIGENETIC FEATURES OF EOCRC

A major challenge in CRC therapy is drug resistance. The current knowledge of CRC genetics has increased the sufficiency of applied conventional cytotoxic chemotherapy and targeted therapy. Genetic screening of EOCRC patients for hereditary cancer syndrome is determinative not only for the rate of cancer risk of relatives but also for appropriate treatment. A pyrimidine analogue, 5-fluorouracil (5-FU) which is widely used in CRC therapy, involves in induction of DNA replication stress response in cells through inhibiting thymidylate synthase. However, studies showed that *APC* mutations reduces the sensitivity to 5-FU^[159]. On the other hand, performance of MSI test is advisable for patients with strongly suspected on the basis of a known family history of colorectal and extracolonic cancers in the case of LS (Figure 1). Studies revealed that while adjuvant chemotherapy with a fluoropyrimidine does not have a beneficial effect on MSI cases and may even worsen the clinical picture, combination of oxaliplatin and infusional 5-FU/leucovorin regarded as more beneficial for these cases^[160,161]. According to Violette *et al.*^[162] increased expression of Reg genes caused *in vitro* resistance to

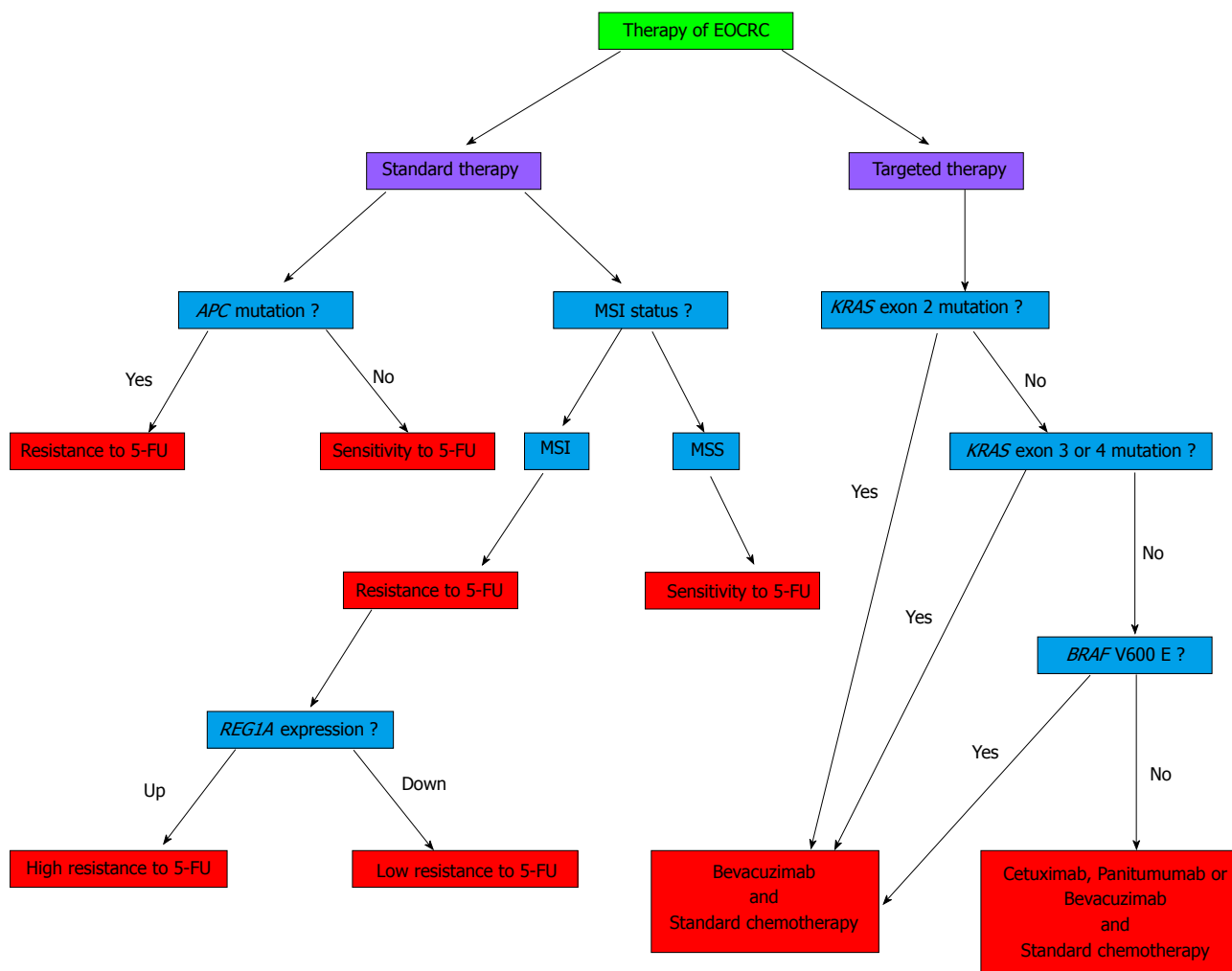


Figure 2 Therapy of early-onset colorectal cancer. EOCRC: Early-onset colorectal cancer; MSI: Microsatellite instability; MSS: Microsatellite stabile; 5-FU: 5-fluorouracil.

the 5-FU. Bishnupuri *et al*^[163] observed a mitogenic effect of the Reg IV protein, with subsequent changes in the expression of genes associated with apoptosis and metastasis. The Reg proteins are previously unappreciated regulators of antiapoptotic proteins in early tumorigenesis and may contribute to increased resistance to apoptotic death during therapy^[163]. As another mechanism of resistance to therapy, the result of our study of the poor prognosis of MSI tumors supports the hypothesis that high *REG1A* expression may contribute to increased resistance to apoptotic death during therapy in MSI tumors^[147]. Because of the important role of *REG1A* in tumorigenesis and development of metastasis in MSI tumors, the use of *REG1A*-specific inhibitors in CRC patients have MSI that may represent a novel significant approach to the treatment of cancer. In addition, according to recent studies, alterations in epigenetic regulation of these genes may also lead to resistance to chemotherapeutic agents. For example, Deng *et al*^[164] found out that reduced expression of miR-21 plays role in resistance to 5-FU therapy *via* targeting *MSH2*. However, miRNA studies have been performing in *in vitro* conditions and to prove the decisive importance of these markers further

advanced studies required.

Nowadays, the application of targeted therapy for CRC has been increasing. The goals of these therapies are interrupting the survival and proliferation of cancer cells^[165]. To date, United States Food and Drug Administration has approved several targeted drugs, such as cetuximab and panitumumab, the anti-EGFR antibodies that suppress the tumor angiogenesis and bevacizumab, an anti-VEGF antibody. Recently, different from bevacizumab, aflibercept and regorafenib have been used as new antiangiogenic agents^[166-168]. Although EGFR is overexpressed in most of the CRC cases, because of the down-stream modifications of EGFR signalling pathway, patients demonstrated different response to this therapy^[169]. Particularly, *KRAS* activating mutations in exon 2 avoid the sufficient therapy with EGFR inhibitors^[170,171]. A small number of patients with wild type *KRAS* exon 2 were demonstrated to have mutations exons 3 and 4 that are also caused *KRAS* activation^[172]. Activating mutations in the other genes that play role in downstream pathway of EGFR signalling, *NRAS*, *BRAF*, *PIK3CA* and *PTEN* are able to lead to resistance to anti-EGFR therapies^[173]. Thus, to predict the success of anti-EGFR monoclonal antibody

therapy, examination of downstream mutations of EGFR signalling pathway should be required before receiving an EGFR inhibitor^[170] (Figure 2). Second targeted signal pathway for CRC therapy is angiogenesis pathway. Bevacizumab is a monoclonal antibody that binds to VEGF-A preventing its interaction with VEGFR-2^[174]. Regorafenib demonstrated a multikinase inhibitor activity against VEGFR-2, VEGFR-3, TIE-2, PDGFR, FGFR, RET, c-Kit and RAF/MEK/ERK pathway^[175]. Aflibercept is a recombinant fusion protein and play a role in the inhibition of interactions between VEGF-A, VEGFB proteins and their specific receptors by acting as a trap receptor binding to VEGF-A and VEGFB^[176]. Thus, the blockage of the genes that encoded these proteins enhances the success of the therapy.

CONCLUSION

Genetic predispositions have been identified in EO CRC clearly distinct from the other types of CRC. The current knowledge about the molecular and genetic basis of EO CRC provides information regarding prognosis of this disease and response to therapies. A proportion of EO CRCs are hereditary forms. Hence, cases should be evaluated for existing of a germline mutation in one of the several MMR genes for suspicion of LS, in the APC gene for suspicion of FAP, or in one of the genes associated with a more uncommon syndrome. Identification of a hereditary syndrome in individuals also provides predictive mutational testing for non-symptomatic relatives. They are found to be positive for the mutation can take precaution for reduction of the risk of cancer-associated morbidity and mortality in this way. In addition, a better understanding of the genetic mechanism of EO CRC is highly likely to lead to develop more beneficial targeted therapies. To date, specifically, studies on MSI CRC, such as LS, herald new diagnostic and therapeutic strategies into clinical approach. It is notable that further research remains to be conducted to more finely characterize the underlying mechanism of sporadic EO CRC, which could allow improved prevention, diagnosis, and treatment of these cases.

ACKNOWLEDGMENTS

We thank to Neslihan Onder Ozdemir for English language editing.

REFERENCES

- 1 Sameer AS. Colorectal cancer: molecular mutations and polymorphisms. *Front Oncol* 2013; **3**: 114 [PMID: 23717813 DOI: 10.3389/fonc.2013.00114]
- 2 Vainio H, Miller AB. Primary and secondary prevention in colorectal cancer. *Acta Oncol* 2003; **42**: 809-815 [PMID: 14968941]
- 3 Siegel R, Naishadham D, Jemal A. Cancer statistics, 2013. *CA Cancer J Clin* 2013; **63**: 11-30 [PMID: 23335087 DOI: 10.3322/caac.21166]
- 4 Nishihara R, Wu K, Lochhead P, Morikawa T, Liao X, Qian ZR, Inamura K, Kim SA, Kuchiba A, Yamauchi M, Imamura Y, Willett WC, Rosner BA, Fuchs CS, Giovannucci E, Ogino S, Chan AT. Long-term colorectal-cancer incidence and mortality after lower endoscopy. *N Engl J Med* 2013; **369**: 1095-1105 [PMID: 24047059 DOI: 10.1056/NEJMoa1301969]
- 5 Shaikat A, Mongin SJ, Geisser MS, Lederle FA, Bond JH, Mandel JS, Church TR. Long-term mortality after screening for colorectal cancer. *N Engl J Med* 2013; **369**: 1106-1114 [PMID: 24047060 DOI: 10.1056/NEJMoa1300720]
- 6 Quirke P, Risio M, Lambert R, von Karsa L, Vieth M. European guidelines for quality assurance in colorectal cancer screening and diagnosis. First Edition--Quality assurance in pathology in colorectal cancer screening and diagnosis. *Endoscopy* 2012; **44** Suppl 3: SE116-SE130 [PMID: 23012115]
- 7 Minardi AJ, Sittig KM, Zibari GB, McDonald JC. Colorectal cancer in the young patient. *Am Surg* 1998; **64**: 849-853 [PMID: 9731812]
- 8 Parramore JB, Wei JP, Yeh KA. Colorectal cancer in patients under forty: presentation and outcome. *Am Surg* 1998; **64**: 563-567; discussion 567-568 [PMID: 9619179]
- 9 Ogino S, Goel A. Molecular classification and correlates in colorectal cancer. *J Mol Diagn* 2008; **10**: 13-27 [PMID: 18165277 DOI: 10.2353/jmoldx.2008.070082]
- 10 Perea J, Alvaro E, Rodríguez Y, Gravalos C, Sánchez-Tomé E, Rivera B, Colina F, Carbonell P, González-Sarmiento R, Hidalgo M, Urioste M. Approach to early-onset colorectal cancer: clinicopathological, familial, molecular and immunohistochemical characteristics. *World J Gastroenterol* 2010; **16**: 3697-3703 [PMID: 20677343]
- 11 Losi L, Di Gregorio C, Pedroni M, Ponti G, Roncucci L, Scarselli A, Genuardi M, Baglioni S, Marino M, Rossi G, Benatti P, Maffei S, Menigatti M, Roncari B, Ponz de Leon M. Molecular genetic alterations and clinical features in early-onset colorectal carcinomas and their role for the recognition of hereditary cancer syndromes. *Am J Gastroenterol* 2005; **100**: 2280-2287 [PMID: 16181381]
- 12 Fairley TL, Cardinez CJ, Martin J, Alley L, Friedman C, Edwards B, Jamison P. Colorectal cancer in U.S. adults younger than 50 years of age, 1998-2001. *Cancer* 2006; **107**: 1153-1161 [PMID: 16862554]
- 13 Savas N, Dagli U, Akbulut S, Yuksel O, Sahin B. Colorectal cancer localization in young patients: should we expand the screening program? *Dig Dis Sci* 2007; **52**: 798-802 [PMID: 17245629]
- 14 You YN, Xing Y, Feig BW, Chang GJ, Cormier JN. Young-onset colorectal cancer: is it time to pay attention? *Arch Intern Med* 2012; **172**: 287-289 [PMID: 22157065 DOI: 10.1001/archinternmed.2011.602]
- 15 Calin GA, Gafà R, Tibiletti MG, Herlea V, Becheanu G, Cavazzini L, Barbanti-Brodano G, Nenci I, Negrini M, Lanza G. Genetic progression in microsatellite instability high (MSI-H) colon cancers correlates with clinico-pathological parameters: A study of the TGRbetaR2, BAX, hMSH3, hMSH6, IGF1R and BLM genes. *Int J Cancer* 2000; **89**: 230-235 [PMID: 10861498]
- 16 Silla IO, Rueda D, Rodríguez Y, García JL, de la Cruz Vigo F, Perea J. Early-onset colorectal cancer: a separate subset of colorectal cancer. *World J Gastroenterol* 2014; **20**: 17288-17296 [PMID: 25516639 DOI: 10.3748/wjg.v20.i46.17288]
- 17 Lynch HT, Shaw TG. Practical genetics of colorectal cancer. *Chin Clin Oncol* 2013; **2**: 12 [PMID: 25841492 DOI: 10.3978/j.issn.2304-3865.2013.03.04]
- 18 Hampel H, Frankel WL, Martin E, Arnold M, Khanduja K, Kuebler P, Clendenning M, Sotamaa K, Prior T, Westman JA, Panescu J, Fix D, Lockman J, LaJeunesse J, Comeras I, de la Chapelle A. Feasibility of screening for Lynch syndrome among patients with colorectal cancer. *J Clin Oncol* 2008; **26**: 5783-5788 [PMID: 18809606 DOI: 10.1200/JCO.2008.17.5950]
- 19 Rodriguez-Bigas MA, Boland CR, Hamilton SR, Henson DE, Jass JR, Khan PM, Lynch H, Perucho M, Smyrk T, Sobin L, Srivastava S. A National Cancer Institute Workshop on Hereditary Nonpolyposis Colorectal Cancer Syndrome: meeting highlights and Bethesda guidelines. *J Natl Cancer Inst* 1997; **89**: 1758-1762 [PMID: 9392616]
- 20 Vasen HF, Watson P, Mecklin JP, Lynch HT. New clinical criteria

- for hereditary nonpolyposis colorectal cancer (HNPCC, Lynch syndrome) proposed by the International Collaborative group on HNPCC. *Gastroenterology* 1999; **116**: 1453-1456 [PMID: 10348829]
- 21 **Umar A**, Boland CR, Terdiman JP, Syngal S, de la Chapelle A, Rüschoff J, Fishel R, Lindor NM, Burgart LJ, Hamelin R, Hamilton SR, Hiatt RA, Jass J, Lindblom A, Lynch HT, Peltomäki P, Ramsey SD, Rodriguez-Bigas MA, Vasen HF, Hawk ET, Barrett JC, Freedman AN, Srivastava S. Revised Bethesda Guidelines for hereditary nonpolyposis colorectal cancer (Lynch syndrome) and microsatellite instability. *J Natl Cancer Inst* 2004; **96**: 261-268 [PMID: 14970275]
 - 22 **Bellizzi AM**, Frankel WL. Colorectal cancer due to deficiency in DNA mismatch repair function: a review. *Adv Anat Pathol* 2009; **16**: 405-417 [PMID: 19851131 DOI: 10.1097/PAP.0b013e3181bb6bdc]
 - 23 **Tunca B**, Pedroni M, Cecener G, Egeli U, Borsi E, Zorluoglu A, Di Gregorio C, Yilmazlar T, Yerci O, de Leon MP. Analysis of mismatch repair gene mutations in Turkish HNPCC patients. *Fam Cancer* 2010; **9**: 365-376 [PMID: 20373145 DOI: 10.1007/s10689-010-9336-7]
 - 24 **Lastella P**, Patruno M, Forte G, Montanaro A, Di Gregorio C, Sabbà C, Suppressa P, Piepoli A, Panza A, Andriulli A, Resta N, Stella A. Identification and surveillance of 19 Lynch syndrome families in southern Italy: report of six novel germline mutations and a common founder mutation. *Fam Cancer* 2011; **10**: 285-295 [PMID: 21286823 DOI: 10.1007/s10689-011-9419-0]
 - 25 **Zahary MN**, Kaur G, Hassan MR, Sidek AS, Singh H, Yeh LY, Ankathil R. Germline mutation and protein expression analysis of mismatch repair genes MSH6 and PMS2 in Malaysian Lynch syndrome patients. *Int J Colorectal Dis* 2014; **29**: 261-262 [PMID: 24072394 DOI: 10.1007/s00384-013-1770-1]
 - 26 **Cruz-Correa M**, Diaz-Algorri Y, Pérez-Mayoral J, Suleiman-Suleiman W, Del Mar Gonzalez-Pons M, Bertrán C, Casellas N, Rodríguez N, Pardo S, Rivera K, Mosquera R, Rodríguez-Quilichini S. Clinical characterization and mutation spectrum in Caribbean Hispanic families with Lynch syndrome. *Fam Cancer* 2015; **14**: 415-425 [PMID: 25782445 DOI: 10.1007/s10689-015-9795-y]
 - 27 **Bertagnolli MM**, Niedzwiecki D, Compton CC, Hahn HP, Hall M, Damas B, Jewell SD, Mayer RJ, Goldberg RM, Saltz LB, Warren RS, Redston M. Microsatellite instability predicts improved response to adjuvant therapy with irinotecan, fluorouracil, and leucovorin in stage III colon cancer: Cancer and Leukemia Group B Protocol 89803. *J Clin Oncol* 2009; **27**: 1814-1821 [PMID: 19273709 DOI: 10.1200/JCO.2008.18.2071]
 - 28 **Yamamoto H**, Imai K. Microsatellite instability: an update. *Arch Toxicol* 2015; **89**: 899-921 [PMID: 25701956 DOI: 10.1007/s00204-015-1474-0]
 - 29 **Woerner SM**, Yuan YP, Benner A, Korff S, von Knebel Doeberitz M, Bork P. SelTarbase, a database of human mononucleotide-microsatellite mutations and their potential impact to tumorigenesis and immunology. *Nucleic Acids Res* 2010; **38**: D682-D689 [PMID: 19820113 DOI: 10.1093/nar/gkp839]
 - 30 **Staffa L**, Echterdiek F, Nelius N, Benner A, Werft W, Lahrmann B, Grabe N, Schneider M, Tariverdian M, von Knebel Doeberitz M, Bläker H, Kloor M. Mismatch repair-deficient crypt foci in Lynch syndrome--molecular alterations and association with clinical parameters. *PLoS One* 2015; **10**: e0121980 [PMID: 25816162 DOI: 10.1371/journal.pone.0121980]
 - 31 **Tougeron D**, Fauquembergue E, Rouquette A, Le Pessot F, Sesboüé R, Laurent M, Berthet P, Mauillon J, Di Fiore F, Sabourin JC, Michel P, Tosi M, Frébourg T, Latouche JB. Tumor-infiltrating lymphocytes in colorectal cancers with microsatellite instability are correlated with the number and spectrum of frameshift mutations. *Mod Pathol* 2009; **22**: 1186-1195 [PMID: 19503063 DOI: 10.1038/modpathol.2009.80]
 - 32 **Schwitalle Y**, Linnebacher M, Ripberger E, Gebert J, von Knebel Doeberitz M. Immunogenic peptides generated by frameshift mutations in DNA mismatch repair-deficient cancer cells. *Cancer Immun* 2004; **4**: 14 [PMID: 15563124]
 - 33 **Kim TM**, Laird PW, Park PJ. The landscape of microsatellite instability in colorectal and endometrial cancer genomes. *Cell* 2013; **155**: 858-868 [PMID: 24209623 DOI: 10.1016/j.cell.2013.10.015]
 - 34 **Markowitz S**, Wang J, Myeroff L, Parsons R, Sun L, Lutterbaugh J, Fan RS, Zborowska E, Kinzler KW, Vogelstein B. Inactivation of the type II TGF-beta receptor in colon cancer cells with microsatellite instability. *Science* 1995; **268**: 1336-1338 [PMID: 7761852]
 - 35 **de Miranda NF**, van Dinther M, van den Akker BE, van Wezel T, ten Dijke P, Morreau H. Transforming Growth Factor β Signaling in Colorectal Cancer Cells With Microsatellite Instability Despite Biallelic Mutations in TGFBR2. *Gastroenterology* 2015; **148**: 1427-1437.e8 [PMID: 25736321 DOI: 10.1053/j.gastro.2015.02.052]
 - 36 **Peltomäki P**. Epigenetic mechanisms in the pathogenesis of Lynch syndrome. *Clin Genet* 2014; **85**: 403-412 [PMID: 24443998 DOI: 10.1111/cge.12349]
 - 37 **Ollikainen M**, Hannelius U, Lindgren CM, Abdel-Rahman WM, Kere J, Peltomäki P. Mechanisms of inactivation of MLH1 in hereditary nonpolyposis colorectal carcinoma: a novel approach. *Oncogene* 2007; **26**: 4541-4549 [PMID: 17260015]
 - 38 **Nagasaka T**, Rhee J, Kloor M, Gebert J, Naomoto Y, Boland CR, Goel A. Somatic hypermethylation of MSH2 is a frequent event in Lynch Syndrome colorectal cancers. *Cancer Res* 2010; **70**: 3098-3108 [PMID: 20388775 DOI: 10.1158/0008-5472.CAN-09-3290]
 - 39 **Gazzoli I**, Loda M, Garber J, Syngal S, Kolodner RD. A hereditary nonpolyposis colorectal carcinoma case associated with hypermethylation of the MLH1 gene in normal tissue and loss of heterozygosity of the unmethylated allele in the resulting microsatellite instability-high tumor. *Cancer Res* 2002; **62**: 3925-3928 [PMID: 12124320]
 - 40 **Miyakura Y**, Sugano K, Akasu T, Yoshida T, Maekawa M, Saitoh S, Sasaki H, Nomizu T, Konishi F, Fujita S, Moriya Y, Nagai H. Extensive but hemiallelic methylation of the hMLH1 promoter region in early-onset sporadic colon cancers with microsatellite instability. *Clin Gastroenterol Hepatol* 2004; **2**: 147-156 [PMID: 15017620]
 - 41 **Hitchins MP**, Wong JJ, Suthers G, Suter CM, Martin DI, Hawkins NJ, Ward RL. Inheritance of a cancer-associated MLH1 germ-line epimutation. *N Engl J Med* 2007; **356**: 697-705 [PMID: 17301300]
 - 42 **Chan TL**, Yuen ST, Kong CK, Chan YW, Chan AS, Ng WF, Tsui WY, Lo MW, Tam WY, Li VS, Leung SY. Heritable germline epimutation of MSH2 in a family with hereditary nonpolyposis colorectal cancer. *Nat Genet* 2006; **38**: 1178-1183 [PMID: 16951683]
 - 43 **Ligtenberg MJ**, Kuiper RP, Chan TL, Goossens M, Hebeda KM, Voorendt M, Lee TY, Bodmer D, Hoenselaar E, Hendriks-Cornelissen SJ, Tsui WY, Kong CK, Brunner HG, van Kessel AG, Yuen ST, van Krieken JH, Leung SY, Hoogerbrugge N. Heritable somatic methylation and inactivation of MSH2 in families with Lynch syndrome due to deletion of the 3' exons of TACSTD1. *Nat Genet* 2009; **41**: 112-117 [PMID: 19098912 DOI: 10.1038/ng.283]
 - 44 **Kuiper RP**, Vissers LE, Venkatachalam R, Bodmer D, Hoenselaar E, Goossens M, Haufe A, Kamping E, Niessen RC, Hogervorst FB, Gille JJ, Redeker B, Tops CM, van Gijn ME, van den Ouweland AM, Rahner N, Steinke V, Kahl P, Holinski-Feder E, Morak M, Kloor M, Stemmler S, Betz B, Hutter P, Bunyan DJ, Syngal S, Culver JO, Graham T, Chan TL, Nagtegaal ID, van Krieken JH, Schackert HK, Hoogerbrugge N, van Kessel AG, Ligtenberg MJ. Recurrence and variability of germline EPCAM deletions in Lynch syndrome. *Hum Mutat* 2011; **32**: 407-414 [PMID: 21309036 DOI: 10.1002/humu.21446]
 - 45 **Hutchison J**, Cohen Z, Onyeagucha BC, Funk J, Nelson MA. How microRNAs influence both hereditary and inflammatory-mediated colon cancers. *Cancer Genet* 2013; **206**: 309-316 [PMID: 24042167 DOI: 10.1016/j.cancergen.2013.06.005]
 - 46 **Valeri N**, Gasparini P, Fabbri M, Braconi C, Veronese A, Lovat F, Adair B, Vannini I, Fanini F, Bottoni A, Costinean S, Sandhu SK, Nuovo GJ, Alder H, Gafa R, Calore F, Ferracin M, Lanza G, Volinia S, Negrini M, McIlhatton MA, Amadori D, Fishel R, Croce CM. Modulation of mismatch repair and genomic stability by miR-155.

- Proc Natl Acad Sci USA* 2010; **107**: 6982-6987 [PMID: 20351277 DOI: 10.1073/pnas.1002472107]
- 47 **Balaguer F**, Moreira L, Lozano JJ, Link A, Ramirez G, Shen Y, Cuatrecasas M, Arnold M, Meltzer SJ, Syngal S, Stoffel E, Jover R, Llor X, Castells A, Boland CR, Gironella M, Goel A. Colorectal cancers with microsatellite instability display unique miRNA profiles. *Clin Cancer Res* 2011; **17**: 6239-6249 [PMID: 21844009 DOI: 10.1158/1078-0432.CCR-11-1424]
- 48 **Earle JS**, Luthra R, Romans A, Abraham R, Ensor J, Yao H, Hamilton SR. Association of microRNA expression with microsatellite instability status in colorectal adenocarcinoma. *J Mol Diagn* 2010; **12**: 433-440 [PMID: 20413677 DOI: 10.2353/jmoldx.2010.090154]
- 49 **Kaur S**, Lotsari JE, Al-Sohaily S, Warusavitarne J, Kohonen-Corish MR, Peltomäki P. Identification of subgroup-specific miRNA patterns by epigenetic profiling of sporadic and Lynch syndrome-associated colorectal and endometrial carcinoma. *Clin Epigenetics* 2015; **7**: 20 [PMID: 25767621 DOI: 10.1186/s13148-015-0059-3]
- 50 **Ozsolak F**, Poling LL, Wang Z, Liu H, Liu XS, Roeder RG, Zhang X, Song JS, Fisher DE. Chromatin structure analyses identify miRNA promoters. *Genes Dev* 2008; **22**: 3172-3183 [PMID: 19056895 DOI: 10.1101/gad.1706508]
- 51 **Lindor NM**, Rabe K, Petersen GM, Haile R, Casey G, Baron J, Gallinger S, Bapat B, Aronson M, Hopper J, Jass J, LeMarchand L, Grove J, Potter J, Newcomb P, Terdiman JP, Conrad P, Moslein G, Goldberg R, Ziogas A, Anton-Culver H, de Andrade M, Siegmund K, Thibodeau SN, Boardman LA, Seminara D. Lower cancer incidence in Amsterdam-I criteria families without mismatch repair deficiency: familial colorectal cancer type X. *JAMA* 2005; **293**: 1979-1985 [PMID: 15855431]
- 52 **Klarskov L**, Holck S, Bernstein I, Nilbert M. Hereditary colorectal cancer diagnostics: morphological features of familial colorectal cancer type X versus Lynch syndrome. *J Clin Pathol* 2012; **65**: 352-356 [PMID: 22287689 DOI: 10.1136/jclinpath-2011-200535]
- 53 **Sánchez-Tomé E**, Rivera B, Perea J, Pita G, Rueda D, Mercadillo F, Canal A, Gonzalez-Neira A, Benitez J, Urioste M. Genome-wide linkage analysis and tumoral characterization reveal heterogeneity in familial colorectal cancer type X. *J Gastroenterol* 2015; **50**: 657-666 [PMID: 25381643 DOI: 10.1007/s00535-014-1009-0]
- 54 **Dunican DS**, McWilliam P, Tighe O, Parle-McDermott A, Croke DT. Gene expression differences between the microsatellite instability (MIN) and chromosomal instability (CIN) phenotypes in colorectal cancer revealed by high-density cDNA array hybridization. *Oncogene* 2002; **21**: 3253-3257 [PMID: 12082642]
- 55 **Bertucci F**, Salas S, Eysteris S, Nasser V, Finetti P, Ginestier C, Charafe-Jauffret E, Liorid B, Bachelart L, Montfort J, Victorero G, Viret F, Ollendorff V, Fert V, Giovaninni M, Delpero JR, Nguyen C, Viens P, Monges G, Birnbaum D, Houlgatte R. Gene expression profiling of colon cancer by DNA microarrays and correlation with histoclinical parameters. *Oncogene* 2004; **23**: 1377-1391 [PMID: 14973550]
- 56 **Francisco I**, Albuquerque C, Lage P, Belo H, Vitoriano I, Filipe B, Claro I, Ferreira S, Rodrigues P, Chaves P, Leitão CN, Pereira AD. Familial colorectal cancer type X syndrome: two distinct molecular entities? *Fam Cancer* 2011; **10**: 623-631 [PMID: 21837511 DOI: 10.1007/s10689-011-9473-7]
- 57 **Therkildsen C**, Jönsson G, Dominguez-Valentin M, Nissen A, Rambech E, Halvarsson B, Bernstein I, Borg K, Nilbert M. Gain of chromosomal region 20q and loss of 18 discriminates between Lynch syndrome and familial colorectal cancer. *Eur J Cancer* 2013; **49**: 1226-1235 [PMID: 23245329 DOI: 10.1016/j.ejca.2012.11.011]
- 58 **Dominguez-Valentin M**, Therkildsen C, Veerla S, Jönsson M, Bernstein I, Borg A, Nilbert M. Distinct gene expression signatures in lynch syndrome and familial colorectal cancer type x. *PLoS One* 2013; **8**: e71755 [PMID: 23951239 DOI: 10.1371/journal.pone.0071755]
- 59 **Watanabe K**, Kawamori T, Nakatsugi S, Ohta T, Ohuchida S, Yamamoto H, Maruyama T, Kondo K, Ushikubi F, Narumiya S, Sugimura T, Wakabayashi K. Role of the prostaglandin E receptor subtype EP1 in colon carcinogenesis. *Cancer Res* 1999; **59**: 5093-5096 [PMID: 10537280]
- 60 **Kim SH**, Park YY, Kim SW, Lee JS, Wang D, DuBois RN. ANGPTL4 induction by prostaglandin E2 under hypoxic conditions promotes colorectal cancer progression. *Cancer Res* 2011; **71**: 7010-7020 [PMID: 21937683 DOI: 10.1158/0008-5472.CAN-11-1262]
- 61 **Schulz E**, Klampfl P, Holzapfel S, Janecke AR, Ulz P, Renner W, Kashofer K, Nojima S, Leitner A, Zebisch A, Wölfler A, Hofer S, Gerger A, Lax S, Beham-Schmid C, Steinke V, Heitzer E, Geigl JB, Windpassinger C, Hoefler G, Speicher MR, Boland CR, Kumanogoh A, Sill H. Germline variants in the SEMA4A gene predispose to familial colorectal cancer type X. *Nat Commun* 2014; **5**: 5191 [PMID: 25307848 DOI: 10.1038/ncomms6191]
- 62 **Jarry J**, Brunet JS, Laframboise R, Drouin R, Latreille J, Richard C, Gekas J, Maranda B, Monczak Y, Wong N, Pouchet C, Zaor S, Kasprzak L, Palma L, Wu MK, Tischkowitz M, Foulkes WD, Chong G. A survey of APC mutations in Quebec. *Fam Cancer* 2011; **10**: 659-665 [PMID: 21779980 DOI: 10.1007/s10689-011-9468-4]
- 63 **Kinzler KW**, Nilbert MC, Su LK, Vogelstein B, Bryan TM, Levy DB, Smith KJ, Preisinger AC, Hedge P, McKechnie D. Identification of FAP locus genes from chromosome 5q21. *Science* 1991; **253**: 661-665 [PMID: 1651562]
- 64 **Polakis P**. Casein kinase 1: a Wnt'er of disconnect. *Curr Biol* 2002; **12**: R499-R501 [PMID: 12176352]
- 65 **Fodde R**, Kuipers J, Rosenberg C, Smits R, Kielman M, Gaspar C, van Es JH, Breukel C, Wiegant J, Giles RH, Clevers H. Mutations in the APC tumour suppressor gene cause chromosomal instability. *Nat Cell Biol* 2001; **3**: 433-438 [PMID: 11283620]
- 66 **Kaplan KB**, Burds AA, Swedlow JR, Bekir SS, Sorger PK, Näthke IS. A role for the Adenomatous Polyposis Coli protein in chromosome segregation. *Nat Cell Biol* 2001; **3**: 429-432 [PMID: 11283619]
- 67 **Rozen P**, Macrae F. Familial adenomatous polyposis: The practical applications of clinical and molecular screening. *Fam Cancer* 2006; **5**: 227-235 [PMID: 16998668]
- 68 **Schlussel AT**, Gagliano RA, Seto-Donlon S, Eggerding F, Donlon T, Berenberg J, Lynch HT. The evolution of colorectal cancer genetics-Part 2: clinical implications and applications. *J Gastrointest Oncol* 2014; **5**: 336-344 [PMID: 25276406 DOI: 10.3978/j.issn.2078-6891.2014.068]
- 69 **Bérout C**, Soussi T. APC gene: database of germline and somatic mutations in human tumors and cell lines. *Nucleic Acids Res* 1996; **24**: 121-124 [PMID: 8594558]
- 70 **Martayan A**, Sanchez-Mete L, Baldelli R, Falvo E, Barnabei A, Conti L, Giacomini P, Appetecchia M, Stigliano V. Gene variants associated to malignant thyroid disease in familial adenomatous polyposis: a novel APC germline mutation. *J Endocrinol Invest* 2010; **33**: 603-606 [PMID: 20935450 DOI: 10.3275/7289]
- 71 **Hamilton SR**, Liu B, Parsons RE, Papadopoulos N, Jen J, Powell SM, Krush AJ, Berk T, Cohen Z, Tetu B. The molecular basis of Turcot's syndrome. *N Engl J Med* 1995; **332**: 839-847 [PMID: 7661930]
- 72 **Groen EJ**, Roos A, Muntinghe FL, Enting RH, de Vries J, Kleibeuker JH, Witjes MJ, Links TP, van Beek AP. Extra-intestinal manifestations of familial adenomatous polyposis. *Ann Surg Oncol* 2008; **15**: 2439-2450 [PMID: 18612695 DOI: 10.1245/s10434-008-9981-3]
- 73 **Septer S**, Slowik V, Morgan R, Dai H, Attard T. Thyroid cancer complicating familial adenomatous polyposis: mutation spectrum of at-risk individuals. *Hered Cancer Clin Pract* 2013; **11**: 13 [PMID: 24093640 DOI: 10.1186/1897-4287-11-13]
- 74 **Lamberti C**, Jungck M, Laarmann M, Knapp M, Caspari R, Friedl W, Sauerbruch T, Propping P, Kruse R. Arylamine N-acetyltransferase type 2 and glutathione S-transferases M1 and T1 polymorphisms in familial adenomatous polyposis. *Pharmacogenetics* 2002; **12**: 49-54 [PMID: 11773864]
- 75 **Hashimoto T**, Ogawa R, Matsubara A, Taniguchi H, Sugano K, Ushiyama M, Yoshida T, Kanai Y, Sekine S. Familial adenomatous polyposis-associated and sporadic pyloric gland adenomas of the upper gastrointestinal tract share common genetic features.

- Histopathology* 2015; **67**: 689-698 [PMID: 25832318 DOI: 10.1111/his.12705]
- 76 **Janssen KP**, Alberici P, Fsihi H, Gaspar C, Breukel C, Franken P, Rosty C, Abal M, El Marjou F, Smits R, Louvard D, Fodde R, Robine S. APC and oncogenic KRAS are synergistic in enhancing Wnt signaling in intestinal tumor formation and progression. *Gastroenterology* 2006; **131**: 1096-1109 [PMID: 17030180]
- 77 **Haigis KM**, Kendall KR, Wang Y, Cheung A, Haigis MC, Glickman JN, Niwa-Kawakita M, Sweet-Cordero A, Sebolt-Leopold J, Shannon KM, Settleman J, Giovannini M, Jacks T. Differential effects of oncogenic K-Ras and N-Ras on proliferation, differentiation and tumor progression in the colon. *Nat Genet* 2008; **40**: 600-608 [PMID: 18372904 DOI: 10.1038/ng.115]
- 78 **Phelps RA**, Chidester S, Dehghanizadeh S, Phelps J, Sandoval IT, Rai K, Broadbent T, Sarkar S, Burt RW, Jones DA. A two-step model for colon adenoma initiation and progression caused by APC loss. *Cell* 2009; **137**: 623-634 [PMID: 19450512 DOI: 10.1016/j.cell.2009.02.037]
- 79 **Obrador-Hevia A**, Chin SF, González S, Rees J, Vilardell F, Greenon JK, Cordero D, Moreno V, Caldas C, Capellá G. Oncogenic KRAS is not necessary for Wnt signalling activation in APC-associated FAP adenomas. *J Pathol* 2010; **221**: 57-67 [PMID: 20196079 DOI: 10.1002/path.2685]
- 80 **Romero-Giménez J**, Dopeso H, Blanco I, Guerra-Moreno A, Gonzalez S, Vogt S, Aretz S, Schwartz S, Capella G, Arango D. Germline hypermethylation of the APC promoter is not a frequent cause of familial adenomatous polyposis in APC/MUTYH mutation negative families. *Int J Cancer* 2008; **122**: 1422-1425 [PMID: 18027849]
- 81 **Kámory E**, Olasz J, Csuka O. Somatic APC inactivation mechanisms in sporadic colorectal cancer cases in Hungary. *Pathol Oncol Res* 2008; **14**: 51-56 [PMID: 18369740 DOI: 10.1007/s12253-008-9019-y]
- 82 **Zhang YY**, Chen SQ, Zhu M, Li JT, Ma GJ, Zhang XM, Zhou JN. [Promoter hypermethylation and loss of heterozygosity of the APC gene in patients with familial adenomatous polyposis]. *Zhonghua Yi Xue Yi Chuan Xue Za Zhi* 2008; **25**: 378-381 [PMID: 18683131]
- 83 **Segditsas S**, Sieber OM, Rowan A, Setien F, Neale K, Phillips RK, Ward R, Esteller M, Tomlinson IP. Promoter hypermethylation leads to decreased APC mRNA expression in familial polyposis and sporadic colorectal tumours, but does not substitute for truncating mutations. *Exp Mol Pathol* 2008; **85**: 201-206 [PMID: 18977219 DOI: 10.1016/j.yexmp.2008.09.006]
- 84 **Pavicic W**, Nieminen TT, Gylling A, Pursiheimo JP, Laiho A, Gyenesi A, Järvinen HJ, Peltomäki P. Promoter-specific alterations of APC are a rare cause for mutation-negative familial adenomatous polyposis. *Genes Chromosomes Cancer* 2014; **53**: 857-864 [PMID: 24946964 DOI: 10.1002/gcc.22197]
- 85 **Berkhout M**, Nagtegaal ID, Cornelissen SJ, Dekkers MM, van de Molengraft FJ, Peters WH, Nagengast FM, van Krieken JH, Jeuken JW. Chromosomal and methylation alterations in sporadic and familial adenomatous polyposis-related duodenal carcinomas. *Mod Pathol* 2007; **20**: 1253-1262 [PMID: 17873900]
- 86 **Wynter CV**, Kambara T, Walsh MD, Leggett BA, Young J, Jass JR. DNA methylation patterns in adenomas from FAP, multiple adenoma and sporadic colorectal carcinoma patients. *Int J Cancer* 2006; **118**: 907-915 [PMID: 16152625]
- 87 **Kamatani A**, Nakagawa Y, Akao Y, Maruyama N, Nagasaka M, Shibata T, Tahara T, Hirata I. Downregulation of anti-oncomirs miR-143/145 cluster occurs before APC gene aberration in the development of colorectal tumors. *Med Mol Morphol* 2013; **46**: 166-171 [PMID: 23397547 DOI: 10.1007/s00795-013-0020-5]
- 88 **Yamaguchi T**, Iijima T, Wakaume R, Takahashi K, Matsumoto H, Nakano D, Nakayama Y, Mori T, Horiguchi S, Miyaki M. Underexpression of miR-126 and miR-20b in hereditary and nonhereditary colorectal tumors. *Oncology* 2014; **87**: 58-66 [PMID: 24994098 DOI: 10.1159/000363303]
- 89 **Croitoru ME**, Cleary SP, Di Nicola N, Manno M, Selander T, Aronson M, Redston M, Cotterchio M, Knight J, Gryfe R, Gallinger S. Association between biallelic and monoallelic germline MYH gene mutations and colorectal cancer risk. *J Natl Cancer Inst* 2004; **96**: 1631-1634 [PMID: 15523092]
- 90 **Lubbe SJ**, Di Bernardo MC, Chandler IP, Houlston RS. Clinical implications of the colorectal cancer risk associated with MUTYH mutation. *J Clin Oncol* 2009; **27**: 3975-3980 [PMID: 19620482 DOI: 10.1200/JCO.2008.21.6853]
- 91 **Church J**, Heald B, Burke C, Kalady M. Understanding MYH-associated neoplasia. *Dis Colon Rectum* 2012; **55**: 359-362 [PMID: 22469805 DOI: 10.1097/DCR.0b013e31823a9392]
- 92 **Yamaguchi S**, Ogata H, Katsumata D, Nakajima M, Fujii T, Tsutsumi S, Asao T, Sasaki K, Kuwano H, Kato H. MUTYH-associated colorectal cancer and adenomatous polyposis. *Surg Today* 2014; **44**: 593-600 [PMID: 23605219 DOI: 10.1007/s00595-013-0592-7]
- 93 **Farrington SM**, Tenesa A, Barnetson R, Wiltshire A, Prendergast J, Porteous M, Campbell H, Dunlop MG. Germline susceptibility to colorectal cancer due to base-excision repair gene defects. *Am J Hum Genet* 2005; **77**: 112-119 [PMID: 15931596]
- 94 **Al-Tassan N**, Chmiel NH, Maynard J, Fleming N, Livingston AL, Williams GT, Hodges AK, Davies DR, David SS, Sampson JR, Cheadle JP. Inherited variants of MYH associated with somatic G: C-> T: A mutations in colorectal tumors. *Nat Genet* 2002; **30**: 227-232 [PMID: 11818965]
- 95 **Knudson AG**. Hereditary cancers: from discovery to intervention. *J Natl Cancer Inst Monogr* 1995; **(17)**: 5-7 [PMID: 8573454]
- 96 **Jones S**, Emmerson P, Maynard J, Best JM, Jordan S, Williams GT, Sampson JR, Cheadle JP. Biallelic germline mutations in MYH predispose to multiple colorectal adenoma and somatic G: C-> T: A mutations. *Hum Mol Genet* 2002; **11**: 2961-2967 [PMID: 12393807]
- 97 **Sieber OM**, Lipton L, Crabtree M, Heinemann K, Fidalgo P, Phillips RK, Bisgaard ML, Orntoft TF, Aaltonen LA, Hodgson SV, Thomas HJ, Tomlinson IP. Multiple colorectal adenomas, classic adenomatous polyposis, and germ-line mutations in MYH. *N Engl J Med* 2003; **348**: 791-799 [PMID: 12606733]
- 98 **Nielsen M**, Joerink-van de Beld MC, Jones N, Vogt S, Tops CM, Vasen HF, Sampson JR, Aretz S, Hes FJ. Analysis of MUTYH genotypes and colorectal phenotypes in patients With MUTYH-associated polyposis. *Gastroenterology* 2009; **136**: 471-476 [PMID: 19032956 DOI: 10.1053/j.gastro.2008.10.056]
- 99 **Miyaki M**, Iijima T, Yamaguchi T, Hishima T, Tamura K, Utsunomiya J, Mori T. Germline mutations of the MYH gene in Japanese patients with multiple colorectal adenomas. *Mutat Res* 2005; **578**: 430-433 [PMID: 15890374]
- 100 **Alhopuro P**, Parker AR, Lehtonen R, Enholm S, Järvinen HJ, Mecklin JP, Karhu A, Eshleman JR, Aaltonen LA. A novel functionally deficient MYH variant in individuals with colorectal adenomatous polyposis. *Hum Mutat* 2005; **26**: 393 [PMID: 16134146]
- 101 **Pin E**, Pastrello C, Tricarico R, Papi L, Quaià M, Fornasarig M, Carnevali I, Oliani C, Fornasin A, Agostini M, Maestro R, Barana D, Aretz S, Genuardi M, Viel A. MUTYH c.933+3A>G; C, associated with a severely impaired gene expression, is the first Italian founder mutation in MUTYH-Associated Polyposis. *Int J Cancer* 2013; **132**: 1060-1069 [PMID: 22865608 DOI: 10.1002/ijc.27761]
- 102 **Venesio T**, Balsamo A, Errichiello E, Ranzani GN, Risio M. Oxidative DNA damage drives carcinogenesis in MUTYH-associated-polyposis by specific mutations of mitochondrial and MAPK genes. *Mod Pathol* 2013; **26**: 1371-1381 [PMID: 23599153 DOI: 10.1038/modpathol.2013.66]
- 103 **Cichy W**, Klinecicz B, Plawski A. Juvenile polyposis syndrome. *Arch Med Sci* 2014; **10**: 570-577 [PMID: 25097590 DOI: 10.5114/aoms.2014.43750]
- 104 **Gallione CJ**, Repetto GM, Legius E, Rustgi AK, Schelley SL, Tejpar S, Mitchell G, Drouin E, Westermann CJ, Marchuk DA. A combined syndrome of juvenile polyposis and hereditary haemorrhagic telangiectasia associated with mutations in MADH4 (SMAD4). *Lancet* 2004; **363**: 852-859 [PMID: 15031030]
- 105 **Brosens LA**, Langeveld D, van Hattem WA, Giardiello FM,

- Offerhaus GJ. Juvenile polyposis syndrome. *World J Gastroenterol* 2011; **17**: 4839-4844 [PMID: 22171123 DOI: 10.3748/wjg.v17.i44.4839]
- 106 **Howe JR**, Shellnut J, Wagner B, Ringold JC, Sayed MG, Ahmed AF, Lynch PM, Amos CI, Sistonen P, Aaltonen LA. Common deletion of SMAD4 in juvenile polyposis is a mutational hotspot. *Am J Hum Genet* 2002; **70**: 1357-1362 [PMID: 11920286]
- 107 **Yamaguchi J**, Nagayama S, Chino A, Sakata A, Yamamoto N, Sato Y, Ashihara Y, Kita M, Nomura S, Ishikawa Y, Igarashi M, Ueno M, Arai M. Identification of coding exon 3 duplication in the BMPRIA gene in a patient with juvenile polyposis syndrome. *Jpn J Clin Oncol* 2014; **44**: 1004-1008 [PMID: 25129392 DOI: 10.1093/jcco/hy111]
- 108 **Woodford-Richens K**, Bevan S, Churchman M, Dowling B, Jones D, Norbury CG, Hodgson SV, Desai D, Neale K, Phillips RK, Young J, Leggett B, Dunlop M, Rozen P, Eng C, Markie D, Rodriguez-Bigas MA, Sheridan E, Iwama T, Eccles D, Smith GT, Kim JC, Kim KM, Sampson JR, Evans G, Tejpar S, Bodmer WF, Tomlinson IP, Houlston RS. Analysis of genetic and phenotypic heterogeneity in juvenile polyposis. *Gut* 2000; **46**: 656-660 [PMID: 10764709]
- 109 **Woodford-Richens KL**, Rowan AJ, Poulsom R, Bevan S, Salovaara R, Aaltonen LA, Houlston RS, Wright NA, Tomlinson IP. Comprehensive analysis of SMAD4 mutations and protein expression in juvenile polyposis: evidence for a distinct genetic pathway and polyp morphology in SMAD4 mutation carriers. *Am J Pathol* 2001; **159**: 1293-1300 [PMID: 11583957]
- 110 **Marsh DJ**, Roth S, Lunetta KL, Hemminki A, Dahia PL, Sistonen P, Zheng Z, Caron S, van Orsouw NJ, Bodmer WF, Cottrell SE, Dunlop MG, Eccles D, Hodgson SV, Järvinen H, Kellokumpu I, Markie D, Neale K, Phillips R, Rozen P, Syngal S, Vijg J, Tomlinson IP, Aaltonen LA, Eng C. Exclusion of PTEN and 10q22-24 as the susceptibility locus for juvenile polyposis syndrome. *Cancer Res* 1997; **57**: 5017-5021 [PMID: 9371495]
- 111 **Ling H**, Pickard K, Ivan C, Isella C, Ikuo M, Mitter R, Spizzo R, Bullock MD, Braicu C, Pileczki V, Vincent K, Pichler M, Stiegelbauer V, Hoefler G, Almeida MI, Hsiao A, Zhang X, Primrose JN, Packham GK, Liu K, Bojja K, Gafà R, Xiao L, Rossi S, Song JH, Vannini I, Fanini F, Kopetz S, Zweidler-McKay P, Wang X, Ionescu C, Irimie A, Fabbri M, Lanza G, Hamilton SR, Berindan-Neagoe I, Medico E, Mirnezami AH, Calin GA, Nicoloso MS. The clinical and biological significance of MIR-224 expression in colorectal cancer metastasis. *Gut* 2015; Epub ahead of print [PMID: 25804630 DOI: 10.1136/gutjnl-2015-309372]
- 112 **Jenne DE**, Reimann H, Nezu J, Friedel W, Loff S, Jeschke R, Müller O, Back W, Zimmer M. Peutz-Jeghers syndrome is caused by mutations in a novel serine threonine kinase. *Nat Genet* 1998; **18**: 38-43 [PMID: 9425897]
- 113 **Schreibman IR**, Baker M, Amos C, McGarrity TJ. The hamartomatous polyposis syndromes: a clinical and molecular review. *Am J Gastroenterol* 2005; **100**: 476-490 [PMID: 15667510]
- 114 **Tomas C**, Soyer P, Dohan A, Dray X, Boudiaf M, Hoeffel C. Update on imaging of Peutz-Jeghers syndrome. *World J Gastroenterol* 2014; **20**: 10864-10875 [PMID: 25152588 DOI: 10.3748/wjg.v20.i31]
- 115 **Giardiello FM**, Trimbath JD. Peutz-Jeghers syndrome and management recommendations. *Clin Gastroenterol Hepatol* 2006; **4**: 408-415 [PMID: 16616343]
- 116 **Giardiello FM**, Brensinger JD, Tersmette AC, Goodman SN, Petersen GM, Booker SV, Cruz-Correa M, Offerhaus JA. Very high risk of cancer in familial Peutz-Jeghers syndrome. *Gastroenterology* 2000; **119**: 1447-1453 [PMID: 11113065]
- 117 **van Lier MG**, Westerman AM, Wagner A, Looman CW, Wilson JH, de Rooij FW, Lemmens VE, Kuipers EJ, Mathus-Vliegen EM, van Leerdam ME. High cancer risk and increased mortality in patients with Peutz-Jeghers syndrome. *Gut* 2011; **60**: 141-147 [PMID: 21205875 DOI: 10.1136/gut.2010.223750]
- 118 **Kopacova M**, Tachei I, Rejchrt S, Bures J. Peutz-Jeghers syndrome: diagnostic and therapeutic approach. *World J Gastroenterol* 2009; **15**: 5397-5408 [PMID: 19916169]
- 119 **Rossi DJ**, Ylikorkala A, Korsisaari N, Salovaara R, Luukko K, Launonen V, Henkemeyer M, Ristimäki A, Aaltonen LA, Makela TP. Induction of cyclooxygenase-2 in a mouse model of Peutz-Jeghers polyposis. *Proc Natl Acad Sci USA* 2002; **99**: 12327-12332 [PMID: 12218179]
- 120 **Takeda H**, Miyoshi H, Tamai Y, Oshima M, Taketo MM. Simultaneous expression of COX-2 and mPGES-1 in mouse gastrointestinal hamartomas. *Br J Cancer* 2004; **90**: 701-704 [PMID: 14760387]
- 121 **Wang HH**, Xie NN, Li QY, Hu YQ, Ren JL, Guleng B. Exome sequencing revealed novel germline mutations in Chinese Peutz-Jeghers syndrome patients. *Dig Dis Sci* 2014; **59**: 64-71 [PMID: 24154639 DOI: 10.1007/s10620-013-2875-7]
- 122 **Mehenni H**, Blouin JL, Radhakrishna U, Bhardwaj SS, Bhardwaj K, Dixit VB, Richards KF, Bermejo-Fenoll A, Leal AS, Raval RC, Antonarakis SE. Peutz-Jeghers syndrome: confirmation of linkage to chromosome 19p13.3 and identification of a potential second locus, on 19q13.4. *Am J Hum Genet* 1997; **61**: 1327-1334 [PMID: 9399902]
- 123 **Amos CI**, Bali D, Thiel TJ, Anderson JP, Gourley I, Frazier ML, Lynch PM, Luchtefeld MA, Young A, McGarrity TJ, Seldin MF. Fine mapping of a genetic locus for Peutz-Jeghers syndrome on chromosome 19p. *Cancer Res* 1997; **57**: 3653-3656 [PMID: 9288765]
- 124 **Markie D**, Huson S, Maher E, Davies A, Tomlinson I, Bodmer WF. A pericentric inversion of chromosome six in a patient with Peutz-Jeghers' syndrome and the use of FISH to localise the breakpoints on a genetic map. *Hum Genet* 1996; **98**: 125-128 [PMID: 8698325]
- 125 **Alhopuro P**, Pichith D, Tuupainen S, Sammalkorpi H, Nybondas M, Saharinen J, Robinson JP, Yang Z, Chen LQ, Orntoft T, Mecklin JP, Järvinen H, Eng C, Moeslein G, Shibata D, Houlston RS, Lucassen A, Tomlinson IP, Launonen V, Ristimäki A, Arango D, Karhu A, Sweeney HL, Aaltonen LA. Unregulated smooth-muscle myosin in human intestinal neoplasia. *Proc Natl Acad Sci USA* 2008; **105**: 5513-5518 [PMID: 18391202 DOI: 10.1073/pnas.0801213105]
- 126 **Launonen V**. Mutations in the human LKB1/STK11 gene. *Hum Mutat* 2005; **26**: 291-297 [PMID: 16110486]
- 127 **Dong SM**, Kim KM, Kim SY, Shin MS, Na EY, Lee SH, Park WS, Yoo NJ, Jang JJ, Yoon CY, Kim JW, Kim SY, Yang YM, Kim SH, Kim CS, Lee JY. Frequent somatic mutations in serine/threonine kinase 11/Peutz-Jeghers syndrome gene in left-sided colon cancer. *Cancer Res* 1998; **58**: 3787-3790 [PMID: 9731485]
- 128 **Resta N**, Simone C, Mareni C, Montera M, Gentile M, Susca F, Gristina R, Pozzi S, Bertario L, Bufo P, Carlomagno N, Ingrosso M, Rossini FP, Tenconi R, Guanti G. STK11 mutations in Peutz-Jeghers syndrome and sporadic colon cancer. *Cancer Res* 1998; **58**: 4799-4801 [PMID: 9809980]
- 129 **Bartosova Z**, Zavodna K, Krivulcik T, Usak J, Mlkva I, Kruzliak T, Hromec J, Usakova V, Kopecka I, Veres P, Bartosova Z, Bujalkova M. STK11/LKB1 germline mutations in the first Peutz-Jeghers syndrome patients identified in Slovakia. *Neoplasma* 2007; **54**: 101-107 [PMID: 17319781]
- 130 **Esteller M**, Avizienyte E, Corn PG, Lothe RA, Baylin SB, Aaltonen LA, Herman JG. Epigenetic inactivation of LKB1 in primary tumors associated with the Peutz-Jeghers syndrome. *Oncogene* 2000; **19**: 164-168 [PMID: 10644993]
- 131 **Miyoshi H**, Nakau M, Ishikawa TO, Seldin MF, Oshima M, Taketo MM. Gastrointestinal hamartomatous polyposis in Lkb1 heterozygous knockout mice. *Cancer Res* 2002; **62**: 2261-2266 [PMID: 11956081]
- 132 **Bardeesy N**, Sinha M, Hezel AF, Signoretti S, Hathaway NA, Sharpless NE, Loda M, Carrasco DR, DePinho RA. Loss of the Lkb1 tumour suppressor provokes intestinal polyposis but resistance to transformation. *Nature* 2002; **419**: 162-167 [PMID: 12226664]
- 133 **Hosogi H**, Nagayama S, Kawamura J, Koshiba Y, Nomura A, Itami A, Okabe H, Satoh S, Watanabe G, Sakai Y. Molecular insights into Peutz-Jeghers syndrome: two probands with a germline mutation of LKB1. *J Gastroenterol* 2008; **43**: 492-497 [PMID: 18600394 DOI: 10.1007/s00535-008-2185-6]

- 134 **Lynch HT**, de la Chapelle A. Hereditary colorectal cancer. *N Engl J Med* 2003; **348**: 919-932 [PMID: 12621137]
- 135 **Samowitz WS**, Curtin K, Lin HH, Robertson MA, Schaffer D, Nichols M, Grunenthal K, Leppert MF, Slattery ML. The colon cancer burden of genetically defined hereditary nonpolyposis colon cancer. *Gastroenterology* 2001; **121**: 830-838 [PMID: 11606497]
- 136 **Herman JG**, Umar A, Polyak K, Graff JR, Ahuja N, Issa JP, Markowitz S, Willson JK, Hamilton SR, Kinzler KW, Kane MF, Kolodner RD, Vogelstein B, Kunkel TA, Baylin SB. Incidence and functional consequences of hMLH1 promoter hypermethylation in colorectal carcinoma. *Proc Natl Acad Sci USA* 1998; **95**: 6870-6875 [PMID: 9618505]
- 137 **Kirzin S**, Marisa L, Guimbaud R, De Reynies A, Legrain M, Laurent-Puig P, Cordelier P, Pradère B, Bonnet D, Meggetto F, Portier G, Brousset P, Selves J. Sporadic early-onset colorectal cancer is a specific sub-type of cancer: a morphological, molecular and genetics study. *PLoS One* 2014; **9**: e103159 [PMID: 25083765 DOI: 10.1371/journal.pone.0103159]
- 138 **Boland CR**, Goel A. Microsatellite instability in colorectal cancer. *Gastroenterology* 2010; **138**: 2073-2087.e3 [PMID: 20420947 DOI: 10.1053/j.gastro.2009.12.064]
- 139 **Walther A**, Johnstone E, Swanton C, Midgley R, Tomlinson I, Kerr D. Genetic prognostic and predictive markers in colorectal cancer. *Nat Rev Cancer* 2009; **9**: 489-499 [PMID: 19536109 DOI: 10.1038/nrc2645]
- 140 **Cai G**, Xu Y, Lu H, Shi Y, Lian P, Peng J, Du X, Zhou X, Guan Z, Shi D, Cai S. Clinicopathologic and molecular features of sporadic microsatellite- and chromosomal-stable colorectal cancers. *Int J Colorectal Dis* 2008; **23**: 365-373 [PMID: 18193434 DOI: 10.1007/s00384-007-0423-7]
- 141 **Silver A**, Sengupta N, Propper D, Wilson P, Hagemann T, Patel A, Parker A, Ghosh A, Feakins R, Dorudi S, Suraweera N. A distinct DNA methylation profile associated with microsatellite and chromosomal stable sporadic colorectal cancers. *Int J Cancer* 2012; **130**: 1082-1092 [PMID: 21455990 DOI: 10.1002/ijc.26104]
- 142 **Hill DA**, Furman WL, Billups CA, Riedley SE, Cain AM, Rao BN, Pratt CB, Spunt SL. Colorectal carcinoma in childhood and adolescence: a clinicopathologic review. *J Clin Oncol* 2007; **25**: 5808-5814 [PMID: 18089879]
- 143 **Lanza G**, Ferracin M, Gafà R, Veronese A, Spizzo R, Pichiorri F, Liu CG, Calin GA, Ctabel 6roce CM, Negrini M. mRNA/microRNA gene expression profile in microsatellite unstable colorectal cancer. *Mol Cancer* 2007; **6**: 54 [PMID: 17716371 DOI: 10.1186/1476-4598-6-54]
- 144 **Yamamoto H**, Adachi Y, Taniguchi H, Kunimoto H, Nosho K, Suzuki H, Shinomura Y. Interrelationship between microsatellite instability and microRNA in gastrointestinal cancer. *World J Gastroenterol* 2012; **18**: 2745-2755 [PMID: 22719182 DOI: 10.3748/wjg.v18.i22.2745]
- 145 **Fernandez-Rozadilla C**, Brea-Fernández A, Bessa X, Alvarez-Urturi C, Abulí A, Clofent J, Payá A, Jover R, Xicola R, Llor X, Andreu M, Castells A, Carracedo A, Castellví-Bel S, Ruiz-Ponte C. BMPRI1A mutations in early-onset colorectal cancer with mismatch repair proficiency. *Clin Genet* 2013; **84**: 94-96 [PMID: 23057600 DOI: 10.1111/cge.12023]
- 146 **Luo T**, Wu S, Shen X, Li L. Network cluster analysis of protein-protein interaction network identified biomarker for early onset colorectal cancer. *Mol Biol Rep* 2013; **40**: 6561-6568 [PMID: 24197691 DOI: 10.1007/s11033-013-2694-0]
- 147 **Ak S**, Tunca B, Yilmazlar T, Tezcan G, Cecener G, Egeli U, Ozturk E, Yerci O, Ertürk E, Zorluoglu A. Microsatellite instability status affects gene expression profiles in early onset colorectal cancer patients. *J Surg Res* 2013; **185**: 626-637 [PMID: 23992855 DOI: 10.1016/j.jss.2013.07.014]
- 148 **Möll R**, Löwe A, Laufer J, Franke WW. Cytokeratin 20 in human carcinomas. A new histodiagnostic marker detected by monoclonal antibodies. *Am J Pathol* 1992; **140**: 427-447 [PMID: 1371204]
- 149 **Tunca B**, Tezcan G, Cecener G, Egeli U, Zorluoglu A, Yilmazlar T, Ak S, Yerci O, Ozturk E, Umut G, Evrensel T. Overexpression of CK20, MAP3K8 and EIF5A correlates with poor prognosis in early-onset colorectal cancer patients. *J Cancer Res Clin Oncol* 2013; **139**: 691-702 [PMID: 23322277 DOI: 10.1007/s00432-013-1372-x]
- 150 **McGregor DK**, Wu TT, Rashid A, Luthra R, Hamilton SR. Reduced expression of cytokeratin 20 in colorectal carcinomas with high levels of microsatellite instability. *Am J Surg Pathol* 2004; **28**: 712-718 [PMID: 15166663]
- 151 **Astrosini C**, Roefzaad C, Dai YY, Dieckgraefe BK, Jöns T, Kemmner W. REG1A expression is a prognostic marker in colorectal cancer and associated with peritoneal carcinomatosis. *Int J Cancer* 2008; **123**: 409-413 [PMID: 18452172 DOI: 10.1002/ijc.23466]
- 152 **Zenilman ME**, Kim S, Levine BA, Lee C, Steinberg JJ. Ectopic expression of reg protein: A marker of colorectal mucosa at risk for neoplasia. *J Gastrointest Surg* 1997; **1**: 194-201; discussion 201-202 [PMID: 9834348]
- 153 **Rechreche H**, Montalto G, Mallo GV, Vasseur S, Marasa L, Soubeyran P, Dagorn JC, Iovanna JL. pap, reg lalpha and reg lbeta mRNAs are concomitantly up-regulated during human colorectal carcinogenesis. *Int J Cancer* 1999; **81**: 688-694 [PMID: 10328217]
- 154 **Sengupta N**, Yau C, Sakthianandeswaren A, Mouradov D, Gibbs P, Suraweera N, Cazier JB, Polanco-Echeverry G, Ghosh A, Taha M, Ahmed S, Feakins R, Propper D, Dorudi S, Sieber O, Silver A, Lai C. Analysis of colorectal cancers in British Bangladeshi identifies early onset, frequent mucinous histotype and a high prevalence of RFX1 deletion. *Mol Cancer* 2013; **12**: 1 [PMID: 23286373 DOI: 10.1186/1476-4598-12-1]
- 155 **Panarelli NC**, Vaughn CP, Samowitz WS, Yantiss RK. Sporadic microsatellite instability-high colon cancers rarely display immunohistochemical evidence of Wnt signaling activation. *Am J Surg Pathol* 2015; **39**: 313-317 [PMID: 25602793 DOI: 10.1097/PAS.0000000000000380]
- 156 **Loughrey MB**, Waring PM, Tan A, Trivett M, Kovalenko S, Beshay V, Young MA, McArthur G, Boussioutas A, Dobrovic A. Incorporation of somatic BRAF mutation testing into an algorithm for the investigation of hereditary non-polyposis colorectal cancer. *Fam Cancer* 2007; **6**: 301-310 [PMID: 17453358]
- 157 **Ak S**, Tunca B, Tezcan G, Cecener G, Egeli U, Yilmazlar T, Ozturk E, Yerci O. MicroRNA expression patterns of tumors in early-onset colorectal cancer patients. *J Surg Res* 2014; **191**: 113-122 [PMID: 24746948 DOI: 10.1016/j.jss.2014.03.057]
- 158 **Melo SA**, Ropero S, Moutinho C, Aaltonen LA, Yamamoto H, Calin GA, Rossi S, Fernandez AF, Carneiro F, Oliveira C, Ferreira B, Liu CG, Villanueva A, Capella G, Schwartz S, Shiekhattar R, Esteller M. A TARBP2 mutation in human cancer impairs microRNA processing and DICER1 function. *Nat Genet* 2009; **41**: 365-370 [PMID: 19219043 DOI: 10.1038/ng.317]
- 159 **Martino-Echarri E**, Henderson BR, Brocardo MG. Targeting the DNA replication checkpoint by pharmacologic inhibition of Chk1 kinase: a strategy to sensitize APC mutant colon cancer cells to 5-fluorouracil chemotherapy. *Oncotarget* 2014; **5**: 9889-9900 [PMID: 25301724]
- 160 **Popat S**, Hubner R, Houlston RS. Systematic review of microsatellite instability and colorectal cancer prognosis. *J Clin Oncol* 2005; **23**: 609-618 [PMID: 15659508]
- 161 **Merok MA**, Ahlquist T, Røyrvik EC, Tufteland KF, Hektoen M, Sjo OH, Mala T, Svindland A, Lothe RA, Nesbakken A. Microsatellite instability has a positive prognostic impact on stage II colorectal cancer after complete resection: results from a large, consecutive Norwegian series. *Ann Oncol* 2013; **24**: 1274-1282 [PMID: 23235802 DOI: 10.1093/annonc/mds614]
- 162 **Violette S**, Poulain L, Dussaulx E, Pepin D, FausSAT AM, Chambaz J, Lacorte JM, Staedel C, Lesuffleur T. Resistance of colon cancer cells to long-term 5-fluorouracil exposure is correlated to the relative level of Bcl-2 and Bcl-X(L) in addition to Bax and p53 status. *Int J Cancer* 2002; **98**: 498-504 [PMID: 11920608]
- 163 **Bishnupuri KS**, Luo Q, Murmu N, Houchen CW, Anant S, Dieckgraefe BK. Reg IV activates the epidermal growth factor receptor/Akt/AP-1 signaling pathway in colon adenocarcinomas. *Gastroenterology* 2006; **130**: 137-149 [PMID: 16401477]
- 164 **Deng J**, Lei W, Fu JC, Zhang L, Li JH, Xiong JP. Targeting miR-21

- enhances the sensitivity of human colon cancer HT-29 cells to chemoradiotherapy in vitro. *Biochem Biophys Res Commun* 2014; **443**: 789-795 [PMID: 24275137 DOI: 10.1016/j.bbrc.2013.11.064]
- 165 **Institute NC.** Targeted Cancer Therapies. [updated 2014 Apr 25]. Rockville, MD: National Cancer Institute, 2014
- 166 **Grothey A,** Van Cutsem E, Sobrero A, Siena S, Falcone A, Ychou M, Humblet Y, Bouché O, Mineur L, Barone C, Adenis A, Tabernero J, Yoshino T, Lenz HJ, Goldberg RM, Sargent DJ, Cihon F, Cupit L, Wagner A, Laurent D. Regorafenib monotherapy for previously treated metastatic colorectal cancer (CORRECT): an international, multicentre, randomised, placebo-controlled, phase 3 trial. *Lancet* 2013; **381**: 303-312 [PMID: 23177514 DOI: 10.1016/S0140-6736(12)61900-X]
- 167 **Van Cutsem E,** Tabernero J, Lakomy R, Prenen H, Prausová J, Macarulla T, Ruff P, van Hazel GA, Moiseyenko V, Ferry D, McKendrick J, Polikoff J, Tellier A, Castan R, Allegra C. Addition of aflibercept to fluorouracil, leucovorin, and irinotecan improves survival in a phase III randomized trial in patients with metastatic colorectal cancer previously treated with an oxaliplatin-based regimen. *J Clin Oncol* 2012; **30**: 3499-3506 [PMID: 22949147]
- 168 **El Zouhairi M,** Charabaty A, Pishvaian MJ. Molecularly targeted therapy for metastatic colon cancer: proven treatments and promising new agents. *Gastrointest Cancer Res* 2011; **4**: 15-21 [PMID: 21464866]
- 169 **Cunningham D,** Humblet Y, Siena S, Khayat D, Bleiberg H, Santoro A, Bets D, Mueser M, Harstrick A, Verslype C, Chau I, Van Cutsem E. Cetuximab monotherapy and cetuximab plus irinotecan in irinotecan-refractory metastatic colorectal cancer. *N Engl J Med* 2004; **351**: 337-345 [PMID: 15269313]
- 170 **Allegra CJ,** Jessup JM, Somerfield MR, Hamilton SR, Hammond EH, Hayes DF, McAllister PK, Morton RF, Schilsky RL. American Society of Clinical Oncology provisional clinical opinion: testing for KRAS gene mutations in patients with metastatic colorectal carcinoma to predict response to anti-epidermal growth factor receptor monoclonal antibody therapy. *J Clin Oncol* 2009; **27**: 2091-2096 [PMID: 19188670 DOI: 10.1200/JCO.2009.21.9170]
- 171 **Knickelbein K,** Zhang L. Mutant KRAS as a critical determinant of the therapeutic response of colorectal cancer. *Genes Dis* 2015; **2**: 4-12 [PMID: 25815366]
- 172 **Therkildsen C,** Bergmann TK, Henrichsen-Schnack T, Ladelund S, Nilbert M. The predictive value of KRAS, NRAS, BRAF, PIK3CA and PTEN for anti-EGFR treatment in metastatic colorectal cancer: A systematic review and meta-analysis. *Acta Oncol* 2014; **53**: 852-864 [PMID: 24666267 DOI: 10.3109/0284186X.2014.895036]
- 173 **French AJ,** Sargent DJ, Burgart LJ, Foster NR, Kabat BF, Goldberg R, Shepherd L, Windschitl HE, Thibodeau SN. Prognostic significance of defective mismatch repair and BRAF V600E in patients with colon cancer. *Clin Cancer Res* 2008; **14**: 3408-3415 [PMID: 18519771 DOI: 10.1158/1078-0432.CCR-07-1489]
- 174 **Hess GP,** Wang PF, Quach D, Barber B, Zhao Z. Systemic Therapy for Metastatic Colorectal Cancer: Patterns of Chemotherapy and Biologic Therapy Use in US Medical Oncology Practice. *J Oncol Pract* 2010; **6**: 301-307 [PMID: 21358960 DOI: 10.1200/JOP.2010.000072]
- 175 **Davis SL,** Eckhardt SG, Messersmith WA, Jimeno A. The development of regorafenib and its current and potential future role in cancer therapy. *Drugs Today (Barc)* 2013; **49**: 105-115 [PMID: 23462625 DOI: 10.1358/dot.2013.49.2.1930525]
- 176 **Economides AN,** Carpenter LR, Rudge JS, Wong V, Koehler-Stec EM, Hartnett C, Pyles EA, Xu X, Daly TJ, Young MR, Fandl JP, Lee F, Carver S, McNay J, Bailey K, Ramakanth S, Hutabarat R, Huang TT, Radziejewski C, Yancopoulos GD, Stahl N. Cytokine traps: multi-component, high-affinity blockers of cytokine action. *Nat Med* 2003; **9**: 47-52 [PMID: 12483208]

P- Reviewer: Ceausu AR, Uppara M

S- Editor: Qi Y L- Editor: A E- Editor: Jiao XK





Published by **Baishideng Publishing Group Inc**

8226 Regency Drive, Pleasanton, CA 94588, USA

Telephone: +1-925-223-8242

Fax: +1-925-223-8243

E-mail: bpgoffice@wjgnet.com

Help Desk: <http://www.wjgnet.com/esps/helpdesk.aspx>

<http://www.wjgnet.com>

